



2026 OFFICIAL GRAND SLAM[®] RULE BOOK



**GRAND SLAM[®]
TENNIS**

2026
OFFICIAL GRAND SLAM®
RULE BOOK

Copyright © 2026 by
Grand Slam Tennis
All Rights Reserved

All references herein to the masculine gender shall also refer to the feminine unless
otherwise specified.

Reproduction of this work in whole or in part, without the prior permission of
Grand Slam Tennis is prohibited.

2026 OFFICIAL GRAND SLAM® RULE BOOK

CONTENTS

GRAND SLAM® RULES

Page Number

ARTICLE I: GENERAL

A.	Purpose and Applicability	1
B.	Grand Slam Tournaments	1
C.	Grand Slam Tennis	1
D.	Open Competition / No Discrimination	1
E.	Publicity, Promotion and Data	1
F.	Waiver of Claims	2
G.	Amendments	2

GRAND SLAM® TOURNAMENT REGULATIONS

ARTICLE I: GENERAL

A.	Purpose	3
B.	Applicability	3
C.	Size of Draws	3
D.	Rain and Force Majeure	3
E.	Wild Cards / No Limitation	3
F.	Entry Fees	3
G.	Entries / Systems of Merit	3
H.	Tournament Doctor	3
I.	Balls	4
J.	Grand Slam Financial Obligations	4
	1. Prize Money	4
	2. Form of Payment, Deductions Notice	6
	3. Amateur Expenses	7
	4. Expenses for Professionals	7
K.	Rules of Tennis and Duties and Procedures for Officials	7
L.	Number of Sets, Tie-break	7
M.	Referee	7
N.	Grand Slam Officiating / Referee, Chief of Grand Slam Supervisors and Grand Slam Supervisors	11
O.	Chief Umpire	11
P.	Chair Umpire	12
Q.	Line Umpire / <u>Review & Video Officials / Match Assistant</u>	14
R.	Player Representation	16
S.	Ballpersons	17
T.	Scheduling / Order of Play	17
U.	On-Site Decisions and Appeals	17
	1. Questions of Fact	17
	2. Questions of Tennis Law	18

V.	Tournament / Match Commencement	18
W.	Players' Rest / Medical	19
	1. Between Qualifying and Main Draw	19
	2. Between Matches	19
	3. Medical	19
	4. Toilet/Change of Attire Break	23
	a. Women's Matches and Mixed Doubles Matches	23
	b. Men's Matches	24
X.	Suspension and Postponement	25
Y.	Facilities Requirements	25
	1. Court	25
	2. Preparation of Courts	25
	3. Net	25
	4. Chairs	25
	5. Scoreboard	25
	6. Back Walls, Net and Fixtures	26
	7. Banners	26
	8. Lighting	26
	9. Practice Courts	26
Z.	Entry Procedures	26
	1. Singles Entries and Withdrawals	26
	2. Singles Main Draw	27
	3. Singles Qualifying Competition	32
	4. Main Draw Doubles Entries and Withdrawals	34
	5. Doubles Main Draw	36
	6. Mixed Doubles	38

GRAND SLAM® CODE OF CONDUCT

ARTICLE I: GENERAL

A.	Purpose	40
B.	Applicability	40
C.	Exclusivity	40
D.	United States Dollars	40

ARTICLE II: PLAYER ENTRY OFFENCES

A.	Entry Offences	40
	1. Late Withdrawal Non-Appearance	40
	2. Playing Another Event	41
B.	Determination and Penalty	41
C.	Payment of Fines	41
D.	Remission of Fines	41
E.	Discretionary Review	42

ARTICLE III: PLAYER ON-SITE OFFENCES

A.	General	43
B.	Punctuality	43
C.	Dress and Equipment	43
	1. Unacceptable Attire	43
	2. Identification	45
	3. Warm-up Clothing	47
	4. Change/Taping	47
	5. Fines	47
D.	Leaving the Court	48
E.	Best Efforts	48
F.	Failure to Complete Match	48
G.	First Round Performance	48
H.	Media Opportunities	49
I.	Ceremonies	49
J.	Start of Match /Time Violation / Delay of Game	49
K.	Audible Obscenity	50
L.	Coaching and Coaches	51
M.	Visible Obscenity	51
N.	Abuse of Balls	52
O.	Abuse of Racquets or Equipment	52
P.	Verbal Abuse	52
Q.	Physical Abuse	53
R.	Unsportsmanlike Conduct	53
S.	Point Penalty Schedule	53
T.	Defaults	54
U.	Doubles Events	54
	1. Warnings/Point Penalties/Game Penalties/Defaults	54
	2. Fines	54
V.	Determination and Penalty	54
W.	Payment of Fines	55
X.	Appeals	55

ARTICLE IV: PLAYER MAJOR OFFENCES

A.	Aggravated Behaviour	55
B.	Conduct Contrary to the Integrity of the Game	56
C.	Determination and Penalty	56
D.	Payment of Fines	57
E.	Appeal	57
F.	Hearing on Appeal	57
	1. Burden of Proof	57
	2. Rules	57
	3. Presentation	57
	4. Statement of Position	57
	5. Evidence	58
	6. Hearing	58
	7. Record	58

8. Interpreter-Legal Advisor	58
G. Decision on Appeal	58
ARTICLE V: DISTRIBUTION OF FINES	58
ARTICLE VI: SUSPENSIONS AND COLLECTION OF FINES	
A. Applicability	59
B. Calendar Years	59
C. Stay of Suspensions Pending Appeals	59
D. Suspension for Non-Payment of Fines	59
ARTICLE VII: INTERPRETATIONS	59
ARTICLE VIII: NOTICE	60
ARTICLE IX: MEDIA CODE OF CONDUCT	60
ARTICLE X: AMENDMENTS	60
ARTICLE XI: TENNIS ANTI-CORRUPTION PROGRAM	60
ARTICLE XII: DRUG OFFENCES	61
APPENDIX A (ADDRESSES)	62
APPENDIX B (WIMBLEDON GRASS OUTSOLE)	63
APPENDIX C (GRASS COURT PROTECTION REGULATIONS FOR SPORTS CHAIRS)	64

GRAND SLAM® RULES

ARTICLE I: GENERAL

A. PURPOSE AND APPLICABILITY

These Grand Slam Rules are promulgated by Grand Slam Tennis for the purpose of ensuring the orderly and fair administration of the four Grand Slam Tournaments. Each player entrant in a Grand Slam Tournament agrees as a condition of such entry to abide by and be subject to these Grand Slam Rules, which hereinafter includes the Grand Slam Tournament Regulations and the Grand Slam Code of Conduct, as amended from time to time by Grand Slam Tennis.

B. GRAND SLAM TOURNAMENTS

The Grand Slam Tournaments are the four official International Championships of Australia, France, Great Britain and the United States. Each Grand Slam Tournament offers on-site prize money to the players competing therein based upon their performance at the tournament.

C. GRAND SLAM TENNIS

Through a shared governance structure, Grand Slam Tennis (GST) is the collaboration between the four Grand Slam tournaments.

Managed through a board comprising the four Grand Slam Chairs supported by their CEOs, Grand Slam Tennis is responsible for reviewing and making decisions on sporting competition matters, including Grand Slam Tournament Rules, Regulations and Code of Conduct, Officiating and relationships with governing bodies and third parties. Decisions made by Grand Slam Tennis in respect of sporting competition matters are reflected in this Grand Slam Rule Book.

D. OPEN COMPETITION / NO DISCRIMINATION

The four Grand Slam Tournaments are open for entry to all internationally ranked tennis players with a ranking of 500 or better based on merit and without discrimination subject only to the conditions herein set forth and to those provisions of the WTA Age Eligibility Rule adopted by the Grand Slam Tournaments and provided, however, that minors under the age of fourteen (14) shall not be eligible for entry. For purposes of this Rule, the player's age as of the first day of the tournament's Main Draw shall be used.

E. PUBLICITY, PROMOTION AND DATA

Each player grants and assigns to the events that he enters, the right in perpetuity to make, use and show from time to time and at their discretion, motion pictures, still pictures and live, taped or filmed television and other reproductions of him during said events and in connection with the promotion of said events without compensation for himself, his heirs, devisees, executors, administrators or assigns. Each player also

agrees to cooperate with the news media and to participate upon request in reasonable promotional activities of the Grand Slam Tournaments. Such activities by a player shall not be represented as an endorsement by the player of any product or company. In addition, it is understood and agreed that all rights in data in any way produced and/or generated during the events (Data), including but not limited to statistics, live scoring and Player Analysis Technology data and similar data, shall be vested in the events and shall be available to them for their use, including licensing, assignment and/or other promotional and commercial purposes. To the extent any player has any rights in the Data, the player grants and assigns those rights irrevocably to the events.

F. WAIVER OF CLAIMS

All players entering Grand Slam Tournaments agree, as a condition of their entry, that for themselves, their executors, administrators, heirs and personal representatives, all claims of any kind, nature and description are waived, including past, present or future claims and injuries, if any, sustained in travelling to or from, or participating in, a Grand Slam Tournament, as against Grand Slam Tennis and the organisers and sponsors of the tournaments.

G. AMENDMENTS

These Grand Slam Rules, Grand Slam Tournament Regulations and Grand Slam Code of Conduct may only be amended, repealed or otherwise modified, in whole or in part, by the affirmative vote of at least three Grand Slam Tournament members of Grand Slam Tennis.

GRAND SLAM® TOURNAMENT REGULATIONS

ARTICLE I: GENERAL

A. PURPOSE

Grand Slam Tennis (GST) promulgates these Grand Slam Tournament Regulations for the purpose of providing fair and reasonable rules for the orderly conduct and operation of the four Grand Slam Tournaments in as uniform a manner as possible while respecting the positive distinctions of each event.

B. APPLICABILITY

These Grand Slam Tournament Regulations, as well as the Grand Slam Rules and Grand Slam Code of Conduct, shall be applicable to all Grand Slam Tournaments and all players participating therein, including wheelchair tennis players and any wheelchair regulations adopted by the Grand Slam Tournaments.

C. SIZE OF DRAWS

Each Tournament shall have singles, Main and Qualifying draws of a maximum of one hundred and twenty-eight (128) and shall have a doubles Main Draw of a maximum of sixty-four (64), unless otherwise authorised by GST.

D. RAIN AND FORCE MAJEURE

Grand Slam Tournaments may be extended as necessary for completion.

E. WILD CARDS / NO LIMITATION

There shall be no limitation as to the number of Wild Cards a player may receive to compete in the Grand Slam Tournaments.

F. ENTRY FEES

There shall be no entry fees for Grand Slam Tournaments.

G. ENTRIES / SYSTEMS OF MERIT

The merit-based systems utilised by each Grand Slam Tournament as the guideline for the acceptance of entries and for the resolution of all ties shall be the singles and doubles rankings systems adopted by GST.

H. TOURNAMENT DOCTOR

Each Grand Slam Tournament will always have a Tournament Doctor and Sports Physiotherapists available during the event.

I. BALLS

Each Grand Slam Tournament will provide tennis balls in accordance with the following:

1. Six (6) balls are to be provided for each Main Draw match and are to be changed after the first seven (7) and thereafter every nine (9) games throughout the tournament. Ball changes and the number of balls used per match shall be the same for all matches throughout the tournament and may be altered only with approval of the Referee in consultation with the Grand Slam Chief of Supervisors.
2. If a ball is lost or becomes unplayable then another may be added as soon as possible for use in play; when there are fewer than four (4) balls remaining, then another ball must be added for use in play. During the warm-up or within two (2) games after a change of ball, a new ball shall be used as a replacement; otherwise, a used ball of like wear shall be supplied. Play must be continuous even if a ball needs to be replaced.
3. If a match is suspended or postponed, the balls used in the warm-up will not be the balls used when play resumes.
4. At least three (3) new balls per day for practice must be available free of charge to each player accepted in the Main Draw or Qualifying competition from the day prior to the commencement of the tournament until they are eliminated. Balls of the make to be used in the Main Draw tournament are to be available for a reasonable period prior to the commencement of the tournament. Players must return practice balls.

J. GRAND SLAM FINANCIAL OBLIGATIONS

1. Prize Money

The players in each Grand Slam Tournament shall be compensated on the basis of their performance by on-site prize money which shall be distributed by each Grand Slam Tournament during or at the conclusion of the tournament.

Prize money shall be paid only for matches played, except that the following procedure for on-site withdrawals shall be in effect in 2026 at all Grand Slam Tournaments:

- a. A player who withdraws from the Main Draw singles competition prior to his/her first match shall receive 50% of the first-round prize money if the following conditions are met:
 - i. The withdrawal must occur after 12 noon, on Tuesday before the start of the Main Draw.
 - ii. The player must be on-site, or at a location approved by the Referee, at the time of the withdrawal and must be declared unfit to play by the Tournament Doctor.

- iii. Players who withdraw on-site become eligible to receive 50% of the first-round prize money only if they have competed in one tournament in the twenty-one (21) days before the commencement of the main draw for the Grand Slam Tournament.
 - iv. Each player is limited to two (2) Grand Slam Tournaments in a calendar year where he/she may receive prize money for the on-site withdrawal.
- b. The Lucky Loser replacing a player who has withdrawn on-site as above shall receive only Main Draw prize money for the round(s) in which they compete.
- c. A player who withdraws from the Qualifying singles competition prior to his/her first match shall receive 50% of the first-round Qualifying prize money if the following conditions are met:
 - i. The withdrawal must occur after 10:00am on the day of the Qualifying Draw.
 - ii. The player must be on-site, or at a location approved by the Referee, at the time of the withdrawal and must be declared unfit to play by the Tournament Doctor.
 - iii. Players who withdraw on-site become eligible to receive 50% of the first-round Qualifying prize money only if they have competed in one tournament in the twenty-one (21) days before the commencement of the Qualifying week for the Grand Slam Tournament.
 - iv. Each player is limited to two (2) Grand Slam Tournaments in a calendar year where he/she may receive prize money for the on-site withdrawal.
- d. The Alternate/Direct Acceptance replacing a player who has withdrawn on-site as above shall receive prize money earned minus the prize money paid to the withdrawing player.
- e. Multiple withdrawals in Singles Qualifying:
 If there are withdrawals at the same time where the players do not receive 50% of the first-round Qualifying prize money, the highest ranked Qualifying Alternates will receive 100% of the first-round Qualifying prize money regardless which withdrawing player was replaced.
- f. A team who withdraws from the Main Draw doubles competition prior to their first match shall receive 50% of the first-round prize money only if the following conditions are met:
 - i. The withdrawal must occur after the release of the Doubles Main Draw.
 - ii. To receive prize money, both players must be on-site at the time of the withdrawal or at a location approved by the Referee and only the

- withdrawing player needs be declared unfit to play by the Tournament Doctor.
 - iii. Players only playing doubles are entitled to compensation.
 - iv. The Alternate team replacing a team who has withdrawn on-site as above shall as a first-round loser receive 50% (25% per player) of the first-round prize money. After the first-round, prize money earned in the Main Draw will be as published, minus the prize money paid to the withdrawing team.
 - v. The withdrawing team who withdraws on-site become eligible to receive 50% (25% per player) of the first-round prize money only if the withdrawing player has competed in one tournament in the twenty-one (21) days before the commencement of the Main Draw week for the Grand Slam Tournament.
 - vi. Each player is limited to two (2) Grand Slam Tournaments in a calendar year where he/she may receive prize money for the on-site withdrawal.
- g. If there are multiple withdrawals at the same time where the players / teams do not receive 25% - 50% of the first-round prize money, the highest ranked On-site Main Draw Alternates will receive up to 100% of the first-round prize money regardless of which withdrawing team was replaced.

In Men's and Women's Doubles, teams withdrawing will receive ranking points and prize money for the previous round, unless:

- i. Neither player was in the Singles Main Draw, or
- ii. the withdrawing player had withdrawn/retired from his/her singles match on the same or the previous day, or
- iii. withdraws from his/her singles match on the following day, or
- iv. both players in the team were/would have been accepted in the Doubles Draw based on their doubles rankings.

In Mixed Doubles, teams withdrawing or retiring will receive prize money for the previous round.

The Referee shall have authority to withhold prize money, in whole or in part, if a player retires or withdraws for any reason.

For the purpose of this Rule a match is played when it is won as a result of any injury or a misconduct default of an opponent. An amateur who enters a Grand Slam Tournament and begins his first match as an amateur may not receive prize money during that tournament.

2. Form of Payment, Deductions Notice

Each Grand Slam Tournament shall pay prize money in national currency unless otherwise approved by GST. All Grand Slam Tournaments are required to give notice of all applicable income tax, VAT tax and any other taxes that are to be deducted from players' prize money. Each Grand Slam Tournament

shall furnish on-site to the player an official form documenting all such deductions from his prize money. A summary report of all such monies paid and deductions, including any fines assessed, shall be forwarded to the Director of Rules and Regulations, Grand Slam Tennis.

3. Amateur Expenses

Grand Slam Tournaments may pay expenses to amateurs who are eligible to and do compete. Such expenses are limited to the actual and reasonable expenses of an amateur incurred pursuant to his participation in the Tournament. The payment of expenses cannot be conditioned on the success of the amateur in the event.

4. Expenses for Professionals

Grand Slam Tournaments may at their option provide housing, meals and local transportation for players provided that the same are available to all competitors without discrimination.

K. RULES OF TENNIS AND DUTIES AND PROCEDURES FOR OFFICIALS

The Rules of Tennis and Duties and Procedures for Officials published by the International Tennis Federation (ITF) shall apply in all Grand Slam Tournament matches, unless otherwise specified by GST.

L. NUMBER OF SETS, TIE-BREAK

All men's singles Main Draw matches in Grand Slam Tournaments shall be the best of five (5) sets. All other matches shall be the best of three (3) sets unless otherwise determined by each Grand Slam Tournament.

The tie-breaks specified in the Rules of Tennis may be used in the Qualifying competition and the Main events, including the final set where a 10 point tie-break will be played.

M. REFEREE

At each Grand Slam tournament, the Referee - who must be Internationally Certified under the Joint Certification Programme (JCP), in consultation with the Grand Slam Chief of Supervisors, shall:

1. Act as final on-site authority for the interpretation of these Grand Slam Rules, Grand Slam Tournament Regulations, Grand Slam Code of Conduct, Duties and Procedures for Officials and Rules of Tennis as to all matters arising that require immediate resolution at the tournament site.
2. Prior to the tournament conduct such training sessions and meetings as may be necessary to familiarise thoroughly all officials with all applicable Rules and Procedures.

3. Appoint a Chief Umpire and Electronic Review Officials and ensure that their duties and responsibilities are performed properly.
4. Approve the assignment of all Chair Umpires and Line Umpires for matches.
5. Remove a Chair Umpire and/or remove, rotate or replace any Line Umpire whenever he decides it is necessary to improve the officiating of a match.
6. Evaluate the performance of all Chair Umpires.
7. Ensure that the tournament is conducted fairly in accordance with these Grand Slam Rules, Grand Slam Tournament Regulations, Grand Slam Code of Conduct, Duties and Procedures for Officials and the Rules of Tennis.
8. Ensure that each court, net, net posts and singles sticks conform to the specifications in the Rules of Tennis and that each court is equipped as follows:
 - a. Chair Umpire's Chair
The Chair Umpire's chair is recommended to be a minimum of six (6) feet (1.83 metres) and a maximum of eight (8) feet (2.44 metres) in height. The Chair Umpire's chair shall be centred along an extension of the net approximately three (3) feet (0.91 metres) from the net post. If a microphone is to be used it must have an "on-off" switch. It must be easily adjustable and not handheld. There should be a sunscreen available.
 - b. Line Umpires' Chairs
Chairs for Service and Base Line Umpires should be located on an extension of their respective lines along the side fence. They shall not be elevated above the surface of the court and should be positioned no less than twelve (12) feet (3.66 metres) from the side of the court. Chairs for Centre Service and Side Line Umpires should be located in the corners at the back of the court unless otherwise directed. Whenever the sun is a factor, Line Umpires' chairs should be positioned so that Line Umpires are not facing the sun. When the sun is not a factor, Line Umpire's chairs should be positioned on the opposite side of the court from the Chair Umpire.
 - c. Net Device
A Net Device may be available for all courts.
 - d. Players' Chairs
Chairs for the players shall be located on each side of the Chair Umpire.
 - e. On-court Service
Water, electrolyte drinks, cups, towels and sawdust shall be available to the players during each match.
 - f. Measuring Device

A measuring stick, tape measure or other measuring device shall be available for the measuring of the net height and location of the singles sticks.

- g. Handheld Device/PDA or Scorecard and Stopwatch
A Handheld Device/PDA or Scorecard and a Stopwatch shall be available to the Chair Umpire of each match.
- 9. Determine and notify competitors of the conditions of play (i.e. make of ball, number of balls, ball changes, type of surface, number of sets, tie-break/advantage sets and other items of interest), prior to the commencement of the tournament.
- 10. It is the responsibility of all players to ascertain their schedules from the Referee for each day's play. The daily Order of Play can be posted electronically at the discretion of the tournament.
- 11. Designate a visible timepiece at a fixed location as the Official Clock of the tournament and notify all players of its designation and location.
- 12. Designate a specific area from which matches shall be called in accordance with the Order of Play using all available and reasonable means. Players must be ready to play when their matches are called. In unusual cases the Referee shall determine when a match is to be called or when a match was in fact called.
- 13. Prior to making the draws consult with the Grand Slam Chief of Supervisors and a player representative to determine:
 - a. the final entry lists
 - b. the ranking necessary for seeding
 - c. any other relevant information necessary for making the draw
- 14. Make the draws for the Qualifying and Main competitions.
- 15. Post all sign-in documents (Qualifying, Main Draws, Alternates and Lucky Losers) in the Referee's office with appropriate notices on the Official Bulletin Board or posted electronically at the discretion of the tournament.
- 16. Prepare the daily Order of Play with the matches scheduled on specific courts to follow each other consecutively without delay or, where appropriate, with the matches scheduled and clearly designated as "not before" a certain time. Once the Order of Play has been released it should not be changed.
 - a. Prior Tournament
Prior to scheduling matches for the first day of play, and although the Referee is not required to do so, the Referee should take into consideration the preceding week's tournaments to determine to what extent players still competing therein may have difficulties in arriving for

play. To the extent possible and providing it does not jeopardise the fairness of scheduling and the completion of the tournament, the Referee should schedule matches so that players with reasonable difficulties can be reasonably accommodated.

b. Qualifying

The Qualifying competition for singles should be scheduled for completion no later than the day before the commencement of play in the Main Draw. If conditions force Qualifying matches to be played on the same day of the Main Draw, successful Qualifiers first-round Main Draw matches should be delayed until the next day wherever possible. Matches should be scheduled so that a player will not be required to play more than two Qualifying matches in the same day, except when weather or unavoidable circumstances cause schedule disruption.

c. Main Draws

Players shall not be scheduled for more than one singles and one doubles match per day, unless weather or other unavoidable circumstances have caused schedule disruption. A player's singles match on any particular day shall be scheduled before his doubles matches unless otherwise directed by the Referee.

17. Decide if a court is fit for play.
18. Decide if a match should be moved to another court. If bad weather or other unavoidable circumstances causes disruption or suspension of a match in progress, then if necessary to eliminate the possibility of a player having to play two (2) singles matches in one day or if necessary to complete the event, move a match to another court. In all other cases a match shall not be moved after it has officially started, i.e. the first serve of the first point has been struck, except with the agreement of the players, which agreement shall not be unreasonably withheld.
Whenever possible a change of courts should be made at the end of a set or after an even number of games in the set in progress.
19. Decide when play should be postponed because of weather conditions, inadequate light or other conditions. If play is postponed on account of darkness such postponement should be made at the end of a set or an even number of games in the set in progress.
20. Ensure delivery whenever possible to every player cited for an on-site offence a copy of the relevant Grand Slam Code of Conduct form.
21. Be present on-site at all times during play. The Referee may not be a Chair Umpire or Chief Umpire in the Tournament.

N. GRAND SLAM OFFICIATING/REFEREE, CHIEF OF GRAND SLAM SUPERVISORS AND GRAND SLAM SUPERVISORS

The Referee shall be the final authority on all officiating matters at each Grand Slam Tournament. The Chief of Grand Slam Supervisors shall serve as a special consultant to the Referee on all officiating matters in order to ensure the uniform application of the rules. The other Grand Slam Supervisors shall assist the Chief of Grand Slam Supervisors and the Referee as they may request and direct.

O. CHIEF UMPIRE

At each Grand Slam tournament, the Chief Umpire - who must be Internationally Certified under the Joint Certification Programme (JCP), in consultation with the Referee and Grand Slam Chief of Supervisors, shall:

1. Recruit a sufficient number of competent officials for the tournament and submit a list of these officials to the Referee and the Administrator of the Grand Slam Officiating Programme at least ninety (90) days in advance of the Championship for review.
2. Conduct the necessary pre-tournament training of officials including review of the Rules of Tennis, the Grand Slam Tournament Regulations, the Grand Slam Code of Conduct and the Duties and Procedures for Officials.
3. Prepare a List of Officials which shall include the name, mailing address and certifications, if any, of all officials used during the tournament. A copy of such list shall be delivered to the Referee and the Grand Slam Chief of Supervisors.
4. Arrange meetings with the Referee, Grand Slam Chief of Supervisors and other officials prior to the tournament.
5. Schedule the on-court assignments of officials for each day of the tournament, subject to the approval of the Referee in consultation with the Grand Slam Chief of Supervisors. Officials for the quarter-finals, semi-finals and finals should have worked a minimum of two (2) matches prior to the quarter-finals.
6. Conduct meetings with all on-court officials to specify court assignments and the procedures to be used for making calls, hand signals, rotation of court assignments, etc.
7. Evaluate the performance of all on-court officials.
8. Be present on-site at all times during play. The Chief Umpire shall not be a Chair Umpire or Line Umpire in the Tournament.
9. Assist the Referee, Grand Slam Chief of Supervisors and Grand Slam Supervisors in the performance of their duties.

P. CHAIR UMPIRE

The Chair Umpire shall:

1. Be completely familiar with all aspects of the Grand Slam Rules, Grand Slam Tournament Regulations, Grand Slam Code of Conduct, Rules of Tennis and the Duties and Procedures for Officials. His duties shall be carried out in accordance with the approved procedures of GST, including any electronic officiating aids and review systems.
2. Dress uniformly with other Chair Umpires as prescribed by the Referee.
3. Find out the correct pronunciation of the players' names.
4. Be on court prior to the arrival of players.
5. Immediately prior to the match meet with the players to:
 - a. State any relevant information for the players.
 - b. Toss a coin in the presence of both players/teams to determine choice of serve and side at the beginning of the match prior to the warm-up. If play is suspended before the match begins, the players may choose again the result of the toss stands.
 - c. Determine if each player is dressed in accordance with the dress provisions of the Grand Slam Code of Conduct. Corrective action taking more than fifteen (15) minutes may result in a default. An appropriate re-warm-up may be authorised.
6. Have a stopwatch which shall be used to time the warm-up (normally four (4) minutes), the twenty-five (25) seconds permitted between points, the ninety (90) seconds permitted during changeovers and the one hundred and twenty (120) seconds permitted during set breaks and all other specific time periods designated under the provisions of any Rule or Regulation.
7. Be responsible for having the appropriate number of balls on court for the match, including used replacement balls. The cans with new balls should be opened just before the match/ball change.
8. Determine all Questions of Fact arising during the match (including warm-up).
9. Ensure that the Rules are observed by the players and all on-court officials.
10. Remove, rotate or replace any Line Umpire whenever he/she decides it will improve the officiating of the match.
11. Make the first determination on all Questions of Tennis Law arising during the match, subject to the right of a player to appeal to the Referee in consultation with the Grand Slam Chief of Supervisors.

12. Announce the score after each point in accordance with GST procedures.
13. Repeat the calls of a Line Umpire only if the call is made in a weak voice or there is a close call that must be confirmed to remove any doubt from the minds of the players.
14. Mark a Scorecard or use a PDA/Tablet during the match in accordance with the approved GST procedures.
15. Overrule a Line Umpire only in the case of a clear mistake by the Line Umpire and only if the overrule is made promptly after the mistake is made. Clear foot faults not called by a Line Umpire, shall be called by the Chair Umpire consistent with the procedures for handling clear mistakes.
16. Be responsible for any ball mark inspection. There shall be no ball mark inspection except on clay courts.
17. Exercise his best efforts to control the crowd. Whenever the spectators are impeding the progress of the match, the Chair Umpire should address them respectfully and request their cooperation.
18. Be responsible for the direction of the ball persons during the match so that they assist, but do not disturb, the players.
19. Be responsible for all changes of balls and for determining if a ball is fit for play. Ensure that the correct numbers of balls are in play. The appropriate number of ball containers should be opened and inspected sufficiently in advance of each ball change to avoid any delay of the match.
20. Determine if a court continues to be fit for play. If a change in condition occurs during a match that the Chair Umpire considers sufficient to make the court unfit for play or if weather or other conditions require suspension of play, they should suspend play and report the same to the Referee. During a suspension and until a match is postponed, the Chair Umpire must ensure that he and all other on-court officials are ready to resume the match. If suspension is due to darkness, it should be at the end of a set or after an even number of games in the set in progress. Upon suspension or any postponement by the Referee, the Chair Umpire shall record the time, point, game and set score, the name of the server, the side on which each player was situated and shall collect all balls in use for the match.
21. At the conclusion of a match make a full report to the Referee and Grand Slam Chief of Supervisors concerning all actions taken under the Grand Slam Code of Conduct during the match.

Q. LINE UMPIRE / REVIEW & VIDEO OFFICIALS / MATCH ASSISTANTS

A Line Umpire shall:

1. Carry out all his duties in accordance with the approved procedures of GST.
2. Dress uniformly with other Line Umpires as prescribed by each Grand Slam Tournament. Line Umpires should not wear clothing in light colours that can interfere with the vision of the players.
3. Be on time for all assignments.
4. Take a position necessary to have the best view of his assigned line.
5. Call all balls on his assigned line only and not give opinions on calls on other lines.
6. Call foot faults when assigned to a baseline, sideline or centre service line.
7. Give a prompt unsighted signal when not able to make a call.
8. Correct a wrong call immediately.
9. Never call a ball “Out/Fault” until it actually hits out.
10. Remain silent if the Chair Umpire overrules a call. All player enquiries must be referred to the Chair Umpire.
11. Report immediately to the Chair Umpire if he/she witnesses a Code Violation not witnessed by the Chair Umpire.
12. Go with a player who takes a toilet, heat or change of attire break to ensure the player does not use the break for any other purposes. If a violation of the procedure takes place, the Line Umpire shall tell the player that he/she is breaking the rules and report this to the Chair Umpire.
13. Not catch balls or hold towels for players.
14. Not converse with spectators.
15. Never applaud players.
16. Not leave the court without the permission of the Chair Umpire.
17. Abide by all the Rules and procedures of GST and follow the Code of Conduct, the ITIA rules and procedures for Officials.
18. Accept that any violation of this policy could be considered a breach of the code of conduct for Officials.

A Review Official (RO) / Video Review Official (VRO) shall:

19. Carry out all his duties in accordance with the approved procedures of GST.
20. Dress uniformly with other Officials as prescribed by each Grand Slam Tournament.
21. Be on time for all assignments.
22. Be ready in the Review Booth 30 minutes prior to the start of the 1st match and 10 minutes before the start of later rotations.
23. Attend all mandatory official's meetings and requested training.
24. Not leave their position until they have been replaced by the next RO/VRO. All necessary information and situations should be reported in full to the replacing RO/VRO. This change should only occur during a changeover or at a set break.
25. If assigned to first match of the day, be responsible for bringing all the necessary equipment (walkie talkie, report paperwork if needed etc.), and, if assigned to the last match of the day, be responsible for returning and charging the walkie talkie and any other electronic equipment.
26. Be in direct communication with the Chair Umpire.
27. During the warm-up:
 - a. View at least one Test Review which shall not be shown to Television or on the screen.; and
 - b. Perform a radio test with the Chair Umpire to make sure the Chair Umpire's radio is on and determine who is serving first.
28. Be responsible for monitoring the status of the review system.
29. In the event of a review system malfunction, immediately notify the Chair Umpire and the Tournament Referee and, once the system is functioning again and has been tested, immediately inform them of the same.
30. Not use the internet while matches are in progress.
31. Not use any electronic devices in the booth while any matches are in progress unless approved by the tournament. This includes personal smart phones, smart watches and personal tablets/laptops. The RO is prohibited from emailing, messaging or texting in any form while they are on duty in the booth.

32. Not talk to the media unless the interview has been approved by the Chief of Officials or the Referee.
33. Abide by all the Rules and procedures of GST and follow the Code of Conduct, the ITIA rules and procedures for officials.
34. Accept that any violation of this policy could be considered a breach of the Code of Conduct for Officials.

A Match Assistant (MA) shall:

35. Carry out all his duties in accordance with the approved procedures of GST.
36. Dress uniformly with other Officials as prescribed by each Grand Slam Tournament.
37. Be on time for all assignments.
38. Go with a player who takes a toilet, heat or change of attire break to ensure the player does not use the break for another purposes. If a violation of the procedures take place, the MA shall tell the player that he/she is breaking the rules and report this to the Chair Umpire.
39. Not converse with spectators.
40. Never applaud players.
41. If starting a match, pass on information to the replacing MA before leaving their designated location.
42. Not use the internet while matches are in progress.
43. Not use any electronic devices whilst courtside during any matches in progress unless approved by the tournament. This includes personal smart phones, smart watches and personal tablets/laptops. The MA is prohibited from emailing, messaging or texting in any form while they are on duty.
44. Abide by all the Rules and procedures of GST and follow the Code of Conduct, the ITIA rules and procedures for officials.
45. Accept that any violation of this policy could be considered a breach of the Code of Conduct for Officials.

R. PLAYER REPRESENTATION

A player representative shall be appointed to represent the interests of the players at the tournament.

S. BALLPERSONS

All ball persons shall assist the players as directed by the Chair Umpire. Ball persons should not wear clothing in light colours that can interfere with the vision of the players.

T. SCHEDULING / ORDER OF PLAY

Each Grand Slam Tournament is responsible for the scheduling of matches and daily Order of Play. These decisions, before finalised or changed, should be made in close co-operation and consultation with the Tournament Director, Referee, Grand Slam Chief of Supervisors, player representative and/or any other parties helpful to a full and careful deliberation.

U. ON-SITE DECISIONS AND APPEALS

1. Questions of Fact

A Question of Fact is defined as an issue relating to what actually occurred during a specific instance. Questions of Fact arising during a match shall be determined by the on-court officials for that match and such determinations are binding on the players and Referee.

A player may request verification by the Chair Umpire of a call or other determination of fact on a point-ending call made by an on-court official.

The request, verification and resumption of play must all be completed within the twenty-five (25) seconds allowed between points, unless the Chair Umpire determines that an extension is necessary. If an extension is granted it shall be concluded with the announcement "Let's Play".

a. Player Appeal

A player may never appeal a determination on a Question of Fact to the Referee.

b. Overrule

The Chair Umpire may overrule a Line Umpire only in the case of a clear mistake by the Line Umpire and only if the overrule is made promptly after the mistake is made.

i. Clear Mistake

It is difficult to define a "Clear Mistake" any more precisely. As a matter of practice, the Chair Umpire must be in a position to make a determination that a call was erroneous beyond any reasonable doubt. Chair Umpires should never make an overrule on a ball that is a close call. To overrule a ball determined "good" by a Line Umpire, the Chair Umpire must have been able to see a space between the ball and the line.

To overrule an “Out” or “Fault” call by a Line Umpire, the Chair Umpire must have seen the ball hit on or inside the line.

ii. Promptly

The Rules of Tennis requires in addition to a “Clear Mistake” that the Chair Umpire must overrule promptly, i.e. immediately after the Line Umpire makes the Clear Mistake. The overrule call must be made almost simultaneously with the Clear Mistake of the Line Umpire.

A Chair Umpire may never make an overrule as a result of a protest or appeal by a player.

A Line Umpire may never change a call as a result of a protest or appeal by the player.

2. Questions of Tennis Law

A Question of Tennis Law is defined as an issue relating to the construction and application of specified facts of these Grand Slam Rules, Grand Slam Code of Conduct and/or the Rules of Tennis. During a match, Questions of Tennis Law shall first be determined by the Chair Umpire. If the Chair Umpire is uncertain or if a player appeals from his determination, then the decision shall be made by the Referee. The decision of the Referee in consultation with the Grand Slam Chief of Supervisors shall be final and non-appealable.

a. Player Appeal

Players shall have the right to appeal against any ruling of Tennis Law in accordance with the procedures hereinafter set forth.

When a player is of the opinion that a ruling by the Chair Umpire on a matter of Tennis Law is incorrect, he may appeal the ruling by notification to the Chair Umpire in a professional and non-abusive manner. Thereupon, the Chair Umpire shall turn off all microphones in the area of the Chair and immediately call for the Referee. Upon his arrival the Chair Umpire shall state all the facts of the incident and the Referee shall be bound by the facts as so determined and stated. Then the Chair Umpire shall state his ruling on the applicable Tennis Law and the player shall state his position with respect to such ruling. The Referee shall review briefly the applicable rules with the player and the Chair Umpire and either affirm or reverse the ruling. Thereafter, play shall be resumed upon the statement by the Referee “Let’s play” and the players must proceed to commence play. Every effort should be made to determine such an appeal within as quickly as possible and upon the statement “Let’s play” the twenty-five (25) second clock shall commence.

V. TOURNAMENT / MATCH COMMENCEMENT

A tournament officially starts when the first serve of the first match is struck. A match officially starts when the first serve is struck.

W. PLAYERS' REST / MEDICAL

1. Between Qualifying and Main Draw

Other than in exceptional circumstances, no player shall be required to play his first-round match in the singles Main Draw until at least twelve (12) hours after the completion of his final Qualifying match. If a player plays two (2) singles Qualifying matches in one day, he should not be scheduled on the following day for his first-round singles match, unless such player is accepted into the tournament as a Lucky Loser.

2. Between Matches

Except when weather or other unavoidable circumstances causes schedule disruption, players shall be scheduled for a maximum of one (1) singles match and one (1) doubles match per day, which shall not be scheduled less than twelve (12) hours after the completion of the last match of such player on the preceding day or round.

Whenever it is necessary to schedule more than one match in the same day such player shall, unless he is in a singles and doubles finals to be played consecutively, be given the following minimum rest periods:

If he has played less than 1 hour	- ½ hour rest
If he has played between 1 hour and 1½ hours	- 1 hour rest
If he has played more than 1½ hours	- 1½ hours rest

3. Medical

a. Medical Conditions

A medical condition is a medical illness or a musculoskeletal injury that warrants medical evaluation and/or medical treatment by the Sports Physiotherapist (also known as the Primary Health Care Provider) during the warm-up or the match.

- **Treatable Medical Conditions**

- Acute medical condition: the sudden development of a medical illness or musculoskeletal injury during the warm-up or the match that requires immediate medical attention.
- Non-acute medical condition: a medical illness or musculoskeletal injury that develops or is aggravated during the warm-up or the match and requires medical attention at the changeover or set break.

- **Non-Treatable Medical Conditions**

- Any medical condition that cannot be treated appropriately, or that will not be improved by available medical treatment within the time allowed.
- Any medical condition (inclusive of symptoms) that has not developed or has not been aggravated during the warm-up or the match.

- General player fatigue.
- Any medical condition requiring injections or intravenous infusions, except for diabetes, for which prior medical certification has been obtained, and for which subcutaneous injections of insulin may be administered. The use of supplemental oxygen is not permitted at any time.

b. Medical Evaluation

During the warm-up or the match, the player may request through the Chair Umpire for the Sports Physiotherapist to evaluate him/her during the next change over or set break. Only in the case that a player develops an acute medical condition that necessitates an immediate stop in play may the player request through the Chair Umpire for the Sports Physiotherapist to evaluate him/her immediately.

The purpose of the medical evaluation is to determine if the player has developed a treatable medical condition and, if so, to determine when medical treatment is warranted. Such evaluation should be performed within a reasonable length of time, balancing player safety on the one hand, and continuous play on the other. At the discretion of the Sports Physiotherapist, such evaluation may be performed in conjunction with the Tournament Doctor and may be performed off-court. *

If the Sports Physiotherapist determines that the player has a non-treatable medical condition, then the player will be advised that no medical treatment will be allowed.

c. Medical Time-Out

A Medical Time-Out is allowed by the Referee in consultation with the Grand Slam Supervisor or Chair Umpire when the Sports Physiotherapist has evaluated the player and has determined that additional time for medical treatment is required. The Medical Time-Out takes place during a change over or set break, unless the Sports Physiotherapist determines that the player has developed an acute medical condition that requires immediate medical treatment.

The Medical Time-Out begins when the Sports Physiotherapist is ready to start treatment. At the discretion of the Sports Physiotherapist, treatment during a Medical Time-Out may take place off-court and may proceed in conjunction with the Tournament Doctor. *

The Medical Time-Out is limited to three (3) minutes of treatment.

A player is allowed one (1) Medical Time-Out for each distinct treatable medical condition. All clinical manifestations of heat illness shall be considered as one (1) treatable medical condition. All treatable musculoskeletal injuries that manifest as part of a kinetic chain continuum shall be considered as one (1) treatable medical condition.

Muscle Cramping: A player may receive treatment for muscle cramping only during the time allotted for change of ends and/or set breaks. Players may not receive a Medical Time-Out for muscle cramping.

In cases where there is doubt about whether the player suffers from an acute medical condition, non-acute medical condition inclusive of muscle cramping, or non-treatable medical condition, the decision of the Sports Physiotherapist, in conjunction with the Tournament Doctor, if appropriate, is final. If the Sports Physiotherapist believes that the player has heat illness, and if muscle cramping is one of the manifestations of heat illness, then the muscle cramping may only be treated as part of the recommended treatment by the Sports Physiotherapist for the heat illness condition.

Note:

A player who has stopped play by claiming an acute medical condition but is determined by the Sports Physiotherapist and/or Tournament Doctor to have muscle cramping, shall be ordered by the Chair Umpire to resume play immediately.

If the player cannot continue playing due to severe muscle cramping, as determined by the Sports Physiotherapist and/or Tournament Doctor, he/she may forfeit the point(s)/game(s) needed to get to a change of ends or set-break in order to receive treatment. There may be a total of two (2) full change of ends treatments for muscle cramping in a match, not necessarily consecutive.

If it is determined by the Chair Umpire or Referee in consultation with the Grand Slam Supervisor that gamesmanship was involved, then a Code Violation for Unsportsmanlike Conduct could be issued.

A total of two (2) consecutive Medical Time-Outs may be allowed by the Referee in consultation with the Grand Slam Supervisor or Chair Umpire for the special circumstance in which the Sports Physiotherapist determines that the player has developed at least two (2) distinct acute and treatable medical conditions. This may include: a medical illness in conjunction with a musculoskeletal injury; two or more acute and distinct musculoskeletal injuries. In such cases, the Sports Physiotherapist will perform a medical evaluation for the two or more treatable medical conditions during a single evaluation and may then determine that two consecutive Medical Time-Outs are required.

d. Medical Treatment

A player may receive on-court medical treatment and/or supplies from the Sports Physiotherapist and/or Tournament Doctor during any changeover or set break. As a guideline, such medical treatment should be limited to two (2) changeovers/set breaks for each treatable medical condition, before or after a Medical Time-Out, and need not be consecutive. Players may not receive medical treatment for non-treatable medical conditions.

- e. **Penalty**
After completion of a Medical Time-Out or medical treatment, any delay in resumption of play shall be penalized by Code Violations for Delay of Game.
Any player abuse of this Medical Rule will be subject to penalty in accordance with the Unsportsmanlike Conduct section of the Code of Conduct.
- f. **Bleeding**
If a player is bleeding, the Chair Umpire must stop play as soon as possible, and the Sports Physiotherapist must be called to the court by the Chair Umpire for evaluation and treatment. The Sports Physiotherapist, in conjunction with the Tournament Doctor if appropriate, will evaluate the source of the bleeding, and will request a Medical Time-Out for treatment if necessary.
If requested by the Sports Physiotherapist and/or Tournament Doctor, the Referee in consultation with the Grand Slam Supervisor or Chair Umpire may allow up to a total of five (5) minutes to assure control of the bleeding.
If blood has spilled onto the court or its immediate vicinity, play must not resume until the blood spill has been cleaned appropriately.
- g. **Vomiting**
If a player is vomiting, the Chair Umpire must stop play if vomiting has spilled onto the court, or if the player requests medical evaluation. If the player requests medical evaluation, then the Sports Physiotherapist must determine if the player has a treatable medical condition, and if so, whether the medical condition is acute or non-acute.
If vomiting has spilled onto the court, play must not resume until the vomit spill has been cleaned appropriately.
- h. **Physical Incapacity**
During a match, if there is an emergency medical condition and the player involved is unable to make a request for a Sports Physiotherapist, the Chair Umpire shall immediately call for the Sports Physiotherapist and Tournament Doctor to assist the player.

Either before or during a match, if a player is considered unable physically to compete, the Sports Physiotherapist and/or Tournament Doctor should inform the Referee and/or Grand Slam Supervisor and recommend that the player is ruled unable to compete in the match to be played, or retired from the match in progress.

The Referee in consultation with the Grand Slam Supervisor shall use great discretion before taking this action and should base the decision on the best interests of professional tennis, as well as taking all medical advice and any other information into consideration.

The player may subsequently compete in another event at the same tournament if the Tournament Doctor determines that the player's condition has improved to the extent that the player may safely physically perform at an appropriate level of play, whether the same day or on a later day.

- * It is recognized that national laws or governmental or other binding regulations imposed upon the event by authorities outside its control may require more compulsory participation by the Tournament Doctor in all decisions regarding diagnosis and treatment.

4. Toilet/Change of Attire Break

a. Women's Matches and Mixed Doubles Matches

A player may request permission to leave the court for a toilet break, a change of attire break, or both (authorised break) but for no other reason.

Number of authorised breaks:

Singles: Each player is entitled to a maximum of one (1) authorised break per match.

Doubles: Each team is entitled to a maximum of two (2) authorised breaks per match. If partners leave the court together, it counts as one (1) of the team's authorised breaks.

A player may take an authorised break at the following times only:

1. Toilet break only (time limit three (3) minutes from the time the player enters the toilet to when she leaves the toilet):
 - On a set break or before the player's own serve
2. Change of attire break only (time limit five (5) minutes from the time the player enters the change area to when she leaves the change area)
 - On a set break
3. Change of attire break taken with a toilet break (time limit five (5) minutes from the time the player enters the toilet/change area to when she leaves the toilet/change area)
 - On a set break

Players exceeding the allowed time will be penalised by back-to-back Time Violations (Warning, Point Penalties only apply).

Additional breaks or breaks taken at times other than those permitted for authorised breaks will be permitted but will be penalised with back-to-back

Time Violations (Warning, Point Penalties only apply) if the player is not ready within the applicable time.

Any time a player leaves the court for a toilet or change of attire break after the warm-up has started, it is considered the authorised break or additional break, regardless of whether or not the opponent has left the court.

b. Men's Matches

A player may be permitted to leave the court for a toilet break. A player is entitled to one (1) toilet break during a best of three set match and two (2) toilet breaks during a best of five set match. For the best of five set matches one toilet break may be taken during the first three sets. The second toilet break may only be taken after the end of the third set. Toilet breaks may only be taken on a set break and can be used for no other purpose. The toilet break is limited to a maximum of three (3) minutes from the time the player enters the toilet until when the player leaves the toilet.

Players exceeding the allowed time will be penalised by back-to-back Time Violations (Warning, Point Penalties only apply).

For doubles, each team is entitled to a total of one (1) break during a best of three set match. If partners leave the court together, it counts as one (1) team's authorised break.

Any time a player leaves the court for a toilet break, it is considered the authorised break, regardless of whether or not the opponent has left the court.

Any toilet break taken after the warm-up has started is considered an authorised break. Additional breaks will be authorised but will be penalised with back-to-back Time Violations (Warning, Point Penalties only apply) if the player is not ready within the allowed time.

When provisions for "equipment out of adjustment" take precedent (e.g. when a players equipment is unplayable). In that case, the Chair Umpire has the authority to decide each request on its own merit.

A player may take an authorised break at the following times only:

1. Toilet break only (time limit three (3) minutes from the time the player enters the toilet to when he leaves the toilet):
 - On a set break
2. Change of attire break only (time limit five (5) minutes from the time the player enters the change area to when he leaves the change area)
 - On a set break

3. Change of attire break taken with a toilet break (time limit five (5) minutes from the time the player enters the toilet/change area to when he leaves the toilet/change area)
 - On a set break

Shirts, socks and shoes should be changed on court.

X. SUSPENSION AND POSTPONEMENT

The Chair Umpire or the Referee in consultation with the Grand Slam Supervisors may suspend a match temporarily due to darkness or conditions of the grounds or weather. Any such suspension by a Chair Umpire must be reported immediately to the Referee. The Referee must, however, make all decisions regarding the postponement of a match until a later day. Unless and until a match is postponed by the Referee, the players, the Chair Umpire and all on-court officials must remain ready to resume the match. If postponement is due to darkness, it should be at the end of a set or after an even number of games have been played in the set in progress. Upon suspension/postponement of a match, the Chair Umpire shall record the time, point, game and set score, the name of the server, the sides on which each player was situated and shall collect all balls in use for the match.

In the case of a suspended or postponed match, the period of re-warm-up shall be as follows:

0-15 minutes delay	-	No re-warm-up
15-30 minutes delay	-	Three (3) minutes re-warm-up
30 or more minutes delay	-	Four (4) minutes re-warm-up

Y. FACILITIES REQUIREMENTS

1. Court

The Court shall conform to the specifications in the Rules of Tennis.

2. Preparation of Courts

Clay courts shall be swept, and lines cleaned before the start of all matches.

3. Net

The net band shall be cloth, canvas, plastic or vinyl, and the net shall extend to the ground, unless otherwise approved by the Referee. Spare nets shall be readily available.

4. Chairs

Chairs shall be provided for players on each side of the Chair Umpire.

5. Scoreboard

The scoreboard shall be placed at the corner or side of the court and shall not obscure the playing visibility.

6. Back Walls, Net and Fixtures

The back fence, walls, net, net post, linesmen boxes and other fixtures on a court shall not be painted or otherwise have any light colours thereon that can interfere with the vision of the players as determined by the Referee.

7. Banners

Whenever possible banners should be placed in locations, other than on the back walls of the courts, where they cannot interfere with the players' vision. If banners are placed on the back walls, they may not be in light colours that can interfere with the vision of the players as determined by the Referee.

8. Lighting

Whenever a Grand Slam Tournament plays under artificial lighting the lighting must be evenly distributed on the court with an intensity of illumination sufficient for professional tennis.

9. Practice Courts

Each Grand Slam Tournament shall provide for the players a sufficient number of practice courts with the same surface and conditions as the Main Draw in order to prepare for and compete in the event.

Z. ENTRY PROCEDURES

1. Singles Entries and Withdrawals

a. Closing Date

The closing date for entries and withdrawals for the singles Main Draw in each Grand Slam Tournament is forty-two (42) days prior to the first Monday of the tournament except that a player on the Alternate list for the singles Main Draw may withdraw at any time prior to such time as he is moved into the Direct Acceptance on account of withdrawals of other players. The closing date for entries and withdrawals for the Singles Qualifying tournaments is twenty-eight (28) days prior to the first Monday of the tournament.

b. Method of Entry or Withdrawal

All eligible players based on the approved ranking system will be automatically entered, any withdrawal must be received by the Referee on or before the prescribed deadline for each Grand Slam Tournament.

c. Late Entries

Any player who submits an entry after the due date may only be accepted into the singles Main Draw as a Wild Card or as a Qualifier.

d. Extensions

GST may in its discretion extend the deadline for entries and/or withdrawals if it determines such action to be necessary when unforeseen circumstances arise.

- e. **Late Withdrawal**
Any player who withdraws after the deadline for withdrawal shall be subject to the sanctions provided in the Grand Slam Code of Conduct.
- f. **No Play After Late Withdrawal**
If a player withdraws from the singles event after the singles withdrawal date for any reason, he may not play in any other tournament or special event during the period of the tournament or compete in the doubles event of the tournament, unless expressly authorised by GST. A violation of this Section shall be punishable by the sanctions set forth in the Code.
- g. **One Tournament During Grand Slam Tournament**
Once a player enters a Grand Slam Tournament and is accepted into the Main Draw of singles or signs in the Qualifying competition, he cannot be committed to any other tournament during the period of that Grand Slam Tournament, unless expressly authorised by GST.
- h. **Suspension / Provisional Suspension**
Any player suspended or provisionally suspended under the GS Code of Conduct, the Tennis Anti-Corruption Program or the Tennis Anti-Doping Programme may remain on the Acceptance List, up until 14:00 GMT on the Friday before the Qualifying draw is to be made, thereafter they will automatically be withdrawn from the event.
If a player is suspended or provisionally suspended after this deadline, they may remain on their respective Acceptance List until the relevant draw is made. At that point, they will automatically be withdrawn from the event.

2. Singles Main Draw

Each Grand Slam Tournament shall specify the time and place that the Referee shall publicly make the singles draw. The draw shall be composed as follows:

- a. **Direct Acceptances**
Players who are accepted directly in the draw by virtue of their singles ranking. The ranking to be used shall be that dated approximately forty-two (42) days prior to the commencement of the tournament.
- b. **Wild Cards**
Players who are included in the draw at the sole discretion of the individual Grand Slam Tournament. Wild Cards may be seeded. Wild Cards must be named at the time the draw is made and Wild Cards that withdraw or default may not be replaced with new Wild Cards after the draw is made, except as provided under Section f. iii. herein. Such position shall be filled by the next eligible person on the entry list, or if the Qualifying competition has commenced, it shall be filled by the

eligible Lucky Loser. The Qualifying competition commences when the first ball of the first Qualifying match is struck.
No player may be named as a Wild Card who has competed in the Qualifying competition of that tournament.

c. Qualifiers

Players who are included in the draw as a result of their success in a Qualifying competition.

If the Main Draw is made prior to the completion of a Qualifying competition, it shall include the appropriate number of qualifying places. Each of these qualifying places will be positioned in the Main Draw in accordance with the standard drawing procedures. Determination as to which Qualifier goes into which qualifying place will be affected by drawing after the Qualifying competition ends.

d. Vacancies

After the draw is made and prior to the commencement of the Qualifying competition, all vacancies created by the withdrawal of unseeded players, including Wild Card withdrawals, shall be filled by the next highest ranked player(s) on the original entry list. After the Qualifying competition commences, such vacancies may only be filled by eligible Lucky Losers.

e. Composition

Unless otherwise agreed, the Singles Main Draw shall be composed as follows:

Total Accepted	Direct Acceptances	Qualifiers	Wild Cards
128	104, 108, 112	16, 12, 8	8

f. Seeds

Players who are given preferential positions in the draw.

i. Seeds Required.

ii. All Grand Slam Tournaments will have a seeded draw. There shall be only one seeding list.

iii. Selection of Seeds

The ranking list dated approximately seven (7) days prior to the tournament shall be the basis for such selection.

iv. Seedings Official/Remake of Draw/Replacement of Seeds

Seedings will not be official until the final draw is made. If two or more of the top eight seeds withdraw more than forty-eight (48) hours before the start of the tournament, the tournament may choose either to remake the draw or let the draw stand.

Notwithstanding anything else contained herein, if a Wild Card withdraws after the original draw and the draw is to be remade, the vacancy created may be filled at the tournament's option by a substitute Wild Card; if the tournament elects not to use a substitute Wild Card, the vacancy shall be treated as any other vacancy below.

Any vacancy created by the withdrawal of a seed prior to the release of the Order of Play for the first day of Main Draw shall be filled as follows:

- If the withdrawal is among seeds 1 to 4, the 5th seed is moved into the open position, the 5th position shall be filled by the 17th seed, and the 17th position shall be filled by the next highest ranked player eligible to be seeded.
- If the withdrawal is among seeds 5 to 16, the 17th seed is moved into the open position and the 17th position shall be filled by the next highest ranked player eligible to be seeded.
- If the withdrawal is among seeds 17 to 32 it shall be filled by the next highest ranked player eligible to be seeded.

The position vacated by that next highest ranked player shall then be filled by the next player on the original entry list if prior to the commencement of the Qualifying competition or by the eligible Lucky Loser if after the commencement of the Qualifying competition.

Any vacancy created by the withdrawal of a seed which occurs after the release of the Order of Play for the first day of the Main Draw shall be filled by eligible Lucky Losers.

v. Number of Seeds

The minimum number of seeded players in the Main Draw will be 16.

vi. Procedure for Placing Seeds

- (1) Place Seed 1 on Line 1 and Seed 2 on Line 32 (32 draw), Line 64 (64 draw) or Line 128 (128 draw).
- (2) To determine the placement of the remaining seeds, draw in pairs of two (Seeds 3 and 4) and groups of four (Seeds 5-8, 9-12 and 13-16) and groups of eight (seeds 17-24 and 25-32) from top to bottom as follows:

	32 draw (8 seeds)	64 draw (16 seeds)	128 draw (16 seeds)	128 draw (32 seeds)
Seeds 3-4	9	17	33	33
	24	48	96	96
Seeds 5-8	8	16	32	32
	16	32	64	64
	17	33	65	65
	25	49	97	97
Seeds 9-12		9	17	17
		25	49	49
		40	80	80
		56	112	112
Seeds 13-16		8	16	16
		24	48	48
		41	81	81
		57	113	113
Seeds 17-24				9
				24
				41
				56
				73
				88
				105
Seeds 25-32				120
				8
				25
				40
				57
				72
				89
				104
				121

- g. Method of Draw
A draw sheet for 128 places will be used.
The placement of seeds as heretofore provided. The remaining players, including the Qualifiers, will be drawn and placed into the vacant spaces in the draw, beginning at the top of the draw.

h. Lucky Losers and Substitutions

i. Lucky Losers

Lucky Losers are those players who have lost in the final round of the Qualifying competition or, if more Lucky Losers are required, those players who have lost in the previous qualifying rounds. Lucky Losers shall be selected based on the rankings used for the determination of qualifying seedings as follows:

The order of the four (4) highest ranked players shall be randomly drawn, thereafter the order shall follow the players' rankings, unless there are more than two (2) main draw withdrawals at the time the Qualifying competition is finished in which case the size of the random draw will be the number of withdrawals plus two (2).

The Lucky Loser list will be posted each day at least one (1) hour prior to the sign-in deadline which will be one-half ($\frac{1}{2}$) hour before the first point is played in the first match. Such list shall not be available for sign-in on the preceding day.

ii. Substitutions

A Lucky Loser shall be inserted in the appropriate position as a substitution for any player who withdraws or is withdrawn before the first point is played in his first match.

In order to be eligible for substitution, a Lucky Loser must:

- (1) report to the Referee and sign the Lucky Loser Sign-In Record at least one-half ($\frac{1}{2}$) hour prior to the start of the first match of each day, and
- (2) be ready to play within five (5) minutes for men's events and fifteen (15) minutes for women's events after the announcement of the default.

If the eligible Lucky Loser is not available to play, in men's events he shall be placed at the bottom of the Lucky Loser priority list for that day corresponding to the qualifying round in which he lost and in women's events she shall forfeit her Lucky Loser status for the duration of the tournament. If the eligible player is playing in the doubles event at the time he is called as a Lucky Loser in singles, the singles match may be rescheduled so he can fill the Lucky Loser position, provided the Referee determines that such rescheduling of the singles match does not cause an unreasonable disruption in the schedule; otherwise the next available Lucky Loser shall be selected to fill such vacancy.

- iii. **Vacancy During Qualifying**
If a Lucky Loser position should become available during the Qualifying competition, it shall be treated the same as the qualifying places for placement in the Main Draw.
- iv. **Vacancy After Qualifying**
If a Lucky Loser position becomes available after the qualifying places are drawn in the Main Draw, the eligible Lucky Loser will be inserted in the appropriate position. If a position becomes available during the day, the eligible Lucky Loser will be inserted in the appropriate position at the time the withdrawal is confirmed. Unless otherwise determined by the Referee, positions becoming available after the start of play for the last match of each day will be filled by the eligible Lucky Loser on the successive day of play. When two (2) or more positions become available at the same time, during the foregoing period, the positions to be occupied by each Lucky Loser will be determined by lot.

3. Singles Qualifying Competition

The Qualifying competition shall be a single elimination tournament. There shall be no pre-qualifying event, however nothing herein shall prevent a Grand Slam Tournament from conducting a separate or local event to determine Wild Cards in the Qualifying competition or Main Draw and unsuccessful participants in said event are not prohibited from entering the Qualifying competition if they are otherwise qualified therefore. If the Qualifying competition is not held at the same site as the Main Draw, the Grand Slam Tournaments will provide suitable facilities and equipment at such alternate site.

- a. **Surface**
The Qualifying competition will be played on the same surface as the Main Draw. However, if there are circumstances beyond the control of the Referee, qualifying matches may be held on a surface different from that of the main event.
- b. **Minimum Size**
The minimum number of places in the singles Qualifying competition will be the same as in the Main Draw unless otherwise authorised by GST.
- c. **Qualifying Competition Required**
All Grand Slam Tournaments must have a Qualifying competition unless there are places available in the Main Draw for all players listed on the applicable rankings who have entered or unless otherwise authorised by GST.

d. Composition

Unless otherwise authorised by GST, the singles Qualifying competition shall be composed as follows:

Accepted	Direct Acceptances	Wild Cards
128	119	9
96	88	8
64	56	8

e. Selection of Qualifying Entries

Direct Acceptances into the Qualifying competition shall be selected from among players with a ranking who have entered, in accordance with any advance entry system. The order of selection shall be consistent with the ranking used for any advance entry system. Ties shall also be resolved consistent with the ranking system. If a withdrawal occurs after the deadline for the Qualifying Draw the vacancy shall be filled from the on-site Alternate Sign-In list using the order of the original Qualifying Alternate list based on the rankings as of the Qualifying entry deadline. Only entered players may sign the Alternate Sign-In list.

f. Byes

In the event there are not enough competitors to fill the Qualifying Draw, then after the seeds are placed in the draw as hereinafter set forth, the required number of byes shall be awarded to the highest seeds as a first priority and any remaining byes shall be drawn by lot in a manner so as to distribute them as evenly as possible throughout the sections of the draw.

g. Sections and Seeds

The Qualifying Draw shall be made in sections, and the winner of each section shall be given a place in the Main Draw. If four (4) Qualifiers are required, there will be four (4) sections; six (6) Qualifiers, six (6) sections; and so on. The draw shall be seeded, and the selection of seeds shall be consistent with the most recent available ranking list. There shall be one seed in the top half and one seed in the bottom half of each section. If a seed withdraws from the Qualifying Draw prior to the release of the Order of Play on the day preceding the start of the Qualifying competition, the next eligible seed takes the open spot and the Alternate takes the spot created by the move. After the release of the Order of Play, the open spot vacated by the seed is filled by an Alternate.

h. Method of Draw

The first seed shall be placed at the top of the first section, the second seed shall be placed at the top of the second section and so on until all sections have one (1) seed on the top line of each section. The remaining seeds shall be drawn as one group. The first drawn shall be placed on the bottom line of the first section, the second drawn shall be placed on

the bottom line of the second section and so on until all sections have one (1) seed on the bottom line of each section. The names of the remaining players shall be drawn and placed in the vacant spaces not occupied by the seeds beginning at the top of the draw.

- i. **Acceptances of Qualifiers into Main Draw**
Once the Qualifying competition has begun, only those players who ultimately qualify and Lucky Losers may be accepted into the Main Draw.
- j. **Drawing of Qualifiers/Lucky Losers**
At the conclusion of the Qualifying competition, the name of one Qualifier will be drawn for each qualifying place in the Main Draw. There shall be no prior designation of qualifying sections to qualifying places in the Main Draw. Likewise, when more than one Lucky Loser is to be inserted into the Main Draw, their positions in the Main Draw shall be determined by drawing. Vacancies occurring before the Qualifying is completed to be filled by Lucky Losers shall be drawn in conjunction with those players who qualified.

4. Main Draw Doubles Entries and Withdrawals

- a. **Entry Deadline**
For Grand Slam Tournaments the entry deadline will be published in the official entry form, and entries must be received by the Referee on or before this deadline.
- b. **Vacancies**
A team shall constitute a doubles entry. Therefore, if either of the players of a team cannot play, that doubles entry is subject to default and substitution. However, if a player has to withdraw through injury or other unavoidable circumstances after the entry deadline, but before the draw, his partner may enter again with another player who has not already been accepted into the doubles event, and this new team may be accepted provided it qualifies by virtue of the ranking used for selection. With this exception, players may not change partners after the doubles entry deadline. In no case shall any player change partners after the draw has been made unless the draw is remade due to the withdrawal of seeded teams.
- c. **Selection of Entries**
Entries shall be accepted in the following order:
Those players who, when teamed together, qualify consistent with the better of their individual singles or doubles ranking on the latest rankings available at the time of the entry deadline. The rankings of the two players of a team shall be added together and these totals will determine who qualifies.

Ties in the men's event shall be resolved as follows (including protected rankings):

1. Team using two (2) doubles rankings
2. Team using one (1) doubles ranking
3. Team using two (2) singles rankings

For ties between teams with the same composition:

- a. For teams using two (2) doubles rankings:
 - i. priority will be given to the team with the fewest combined number of tournaments played; and if still tied, then priority will be given to the team with the highest combined number of points; and if still tied, then
 - ii. if one (1) team is using a Protected Ranking, then they are placed below the team using two (2) actual rankings; but
 - iii. if both teams have one (1) or two (2) members using a protected ranking, then the team with the strongest individual doubles ranking, including protected ranking, will receive priority.
- b. For teams using one (1) doubles and one (1) singles ranking, priority will be given to the strongest individual doubles ranking.
- c. For teams using two (2) singles rankings, priority will be given to the strongest individual singles ranking.
- d. If none of the above Regulations above break the tie, then the order shall be determined by a draw.

Ties in the women's event shall be resolved as follows:

1. Team using two (2) singles rankings;
2. Team using one (1) singles ranking;
3. Team using two (2) doubles rankings.

For ties between teams with the same composition:

- a. For ties between teams using singles rankings with the same composition:
 - i. priority will be given to the team with the strongest individual singles ranking.
 - ii. For teams using two (2) doubles rankings, priority will be given to:
 - A. the team with the strongest combined total points, thereafter
 - B. the team with the strongest combined ranking from the previous week; and then

- C. the team with the fewest combined number of tournaments played over the previous 52-week period.
 - b. At each stage for breaking a tie (under the above regulations), a team using a Special Ranking is positioned below the other team(s). If one player on each team is using a Special Ranking, then the ranking of each remaining player determines the order.
- d. If none of the above Regulations above break the tie, then the order shall be determined by a draw.
- e. Substitution of Doubles Teams
If substitutes are required, Alternates shall be selected. The sign-in for doubles Alternates shall follow the same principles as the sign-in for singles Alternates. One member of an Alternate team may sign in for the team. Substitutions shall come from the Alternate list of teams not accepted directly into the Main Draw and shall follow the acceptance procedures outlined above. Only substitutions of the originally paired teams are permitted.
- f. Suspension / Provisional Suspension
Any player suspended or provisionally suspended under the GS Code of Conduct, the Tennis Anti-Corruption Program or the Tennis Anti-Doping Programme may remain on the Acceptance List, up until 14:00 GMT on the Friday before the Doubles Main Draw is to be made, thereafter they will automatically be withdrawn from the event.
If a player is suspended or provisionally suspended after this deadline, they may remain on the Doubles Acceptance List until the relevant draw is made. At that point, they will automatically be withdrawn from the event.
- g. Each Grand Slam Tournament may make changes to the above-listed procedures, provided that such changes are published at least eight weeks prior to the start of the Doubles Competition.

5. Doubles Main Draw

- a. Time
Each Grand Slam Tournament shall specify the time that the draw is to be made. Once the draw is made there can be no change except for substitution.
- b. Size of Draw
Unless otherwise approved by GST, the draw shall be for 64 teams.

- c. **Wild Cards**
The maximum number of doubles Wild Cards for a 64 team draw shall be seven (7).
A Grand Slam Tournament may not enter players as a Wild Card team without the consent of both players. A Wild Card may be offered to any team that is not a Direct Acceptance on the original entry list after entries have closed. A Wild Card may be offered to one player on an entered team if it is conditional on his playing with another player. Wild Cards must be named at the time the draw is made.
- d. **Seeds**
- i. The draw shall be seeded, and the number of seeds shall be sixteen (16).
 - ii. Each Grand Slam Tournament shall be the final authority for the selection and resolution of ties with respect to seeds. Such selection and resolution shall be consistent with the ranking list dated approximately seven (7) days prior to the event.
 - iii. If, prior to the draw being finalised, it is determined that one-fourth ($\frac{1}{4}$) or more of the seeded pairs are unable to play, the entire draw may be remade.
Any vacancy created by the withdrawal of a seeded team prior to the release of the Order of Play for the first day of Main Draw shall be filled as follows:
 - (1) If the withdrawal is among seeds 1 to 4, the 5th seed is moved into the open position, and the 5th position shall be filled by the next highest ranked team eligible to be seeded.
 - (2) If the withdrawal is among seeds 5 to 16 it shall be filled by the next highest ranked team eligible to be seeded.The position vacated by that next highest ranked team shall then be filled by the next team on the original entry list.
Any vacancy created by the withdrawal of a seed which occurs after the release of the Order of Play for the first day of the Main Draw shall be filled by eligible Alternates.
 - iv. Even if the draw is remade, the original entry pairings may not be changed except as provided with respect to vacancies.
- e. **Method of Draw**
The placing of seeds and byes and the drawing of the remaining teams shall be in accordance with the same principles used in the singles Main Draw.

6. Mixed Doubles

- a. Selection of Entries
Those players who, when teamed together, qualify consistent with the better of their individual singles or doubles ranking as determined by each Grand Slam Tournament. The rankings of the two players of a team shall be added together and these totals will determine who qualifies.
- b. Ties for acceptances will be resolved as follows:
 - 1. Team using two (2) singles rankings
 - 2. Team using one (1) singles ranking
 - 3. A team using an Entry Protection/Special Ranking is positioned below the other team(s). If one player on each team is using an Entry Protection/Special Ranking then the ranking of each remaining player determines the order.
 - 4. Team using two (2) doubles rankings.
- c. For ties between teams with the same composition:
 - i. For ties between teams using singles rankings with the same composition, priority will be given to the team with the strongest individual singles ranking.
 - ii. For teams using two doubles rankings priority will be given to:
 - a. the team with the greatest combined total points; and thereafter
 - b. the team with the fewest combined number of tournaments played.
- d. If none of the above regulations break the tie, then the order shall be determined by a draw.
- e. Seeds
Will be based on the best combined doubles rankings as determined by each Grand Slam Tournament.
 - 1. Ties for seedings will be broken as follows: Priority will be given to the team with the greatest combined total points thereafter to the team with the fewest combined number of tournaments played.
- f. Wild Cards
The maximum number of Mixed doubles Wild Cards shall be up to eight (8), regardless of the draw size.
A Grand Slam Tournament may not enter players as a Wild Card team without the consent of both players. A Wild Card may be offered to any team that is not a Direct Acceptance on the original entry list after entries have closed. A Wild Card may be offered to one player on an entered team if it is conditional on his playing with another player. Wild Cards must be named at the time the draw is made.

- g. Each Grand Slam Tournament may make changes to the above-listed procedures, provided that such changes are published at least eight weeks prior to the start of the Mixed Doubles Competition.

GRAND SLAM® CODE OF CONDUCT

ARTICLE I: GENERAL

A. PURPOSE

Grand Slam Tennis (GST) promulgates this Grand Slam Code of Conduct (Code) in order to maintain fair and reasonable standards of conduct by players and the organisers of Grand Slam Tournaments, and to protect their respective rights, the rights of the public and the integrity of the Sport of Tennis.

B. APPLICABILITY

This Code is applicable as stated herein to the four Grand Slam Tournaments.

C. EXCLUSIVITY

This Code is the exclusive basis for disciplinary action against any player at Grand Slam Tournaments who violates its provisions. Players are also subject to the Anti-Corruption and Anti-Doping programmes set forth in Articles XI and XII respectively and to the Major Offense reciprocity provision set forth in Article IV B.

D. UNITED STATES DOLLARS

All monetary fines set forth in the Code are in US Dollars.

ARTICLE II: PLAYER ENTRY OFFENCES

A. ENTRY OFFENCES

1. Late Withdrawal Non-Appearance

No player may withdraw his entry from the Main Draw of a Grand Slam Tournament for any reason after the withdrawal deadline, except that players on the Alternate list for the Main Draw may withdraw at any time prior to such time as they are moved into the Main Draw as a Direct Acceptance. A player who has entered the Main Draw or Qualifying and been accepted, and not timely withdrawn, shall appear for play.

Violation of this Section shall be penalised as follows:

Ranking (Entry List)	Fine Amount
1 - 10	\$40,000
11 - 25	\$20,000
26 - 75	\$12,000
76 - 100	\$ 8,000
101 - 150	\$ 4,000
151 +	\$ 2,000

In circumstances that are flagrant and particularly injurious to the success of the Grand Slam Tournament, or are singularly egregious, a single violation of this Section shall also constitute the Major Offence of “Aggravated Behaviour”.

2. Playing Another Event

No player who has entered and been accepted into the Main Draw of a Grand Slam Tournament shall play in any other tennis event during the period of such tournament unless authorised by GST. Violation of this Section shall result in a fine of up to \$50,000 in addition to any other fines provided in the Code. In circumstances that are flagrant and particularly injurious to the success of the tournament, or are singularly egregious, a single violation of this Section shall also constitute the Major Offence of “Aggravated Behaviour”. In any case, two violations within the same calendar year shall also constitute the Major Offence of “Aggravated Behaviour”.

B. DETERMINATION AND PENALTY

The Director of Rules and Regulations, GST or his or her designate, shall make such investigation as is reasonable to determine the facts regarding all Entry Offences and upon determining that a violation has occurred shall specify the fine and/or other punishment therefore and mail written notice thereafter to the player.

C. PAYMENT OF FINES

All fines levied by the Director of Rules and Regulations, GST or his or her designate, shall be paid by the player to GST by delivery to the Director of Rules and Regulations, GST or his or her designate, within ten (10) days after the notice thereof is provided.

D. REMISSION OF FINES

A player who has been fined for Late Withdrawal or Non-Appearance as above provided may apply to the Director of Rules and Regulations, GST or his or her designate for remission of such fine. The Director of Rules and Regulations, GST or his or her designate, may remit the “first” Late Withdrawal or Non-Appearance fine in each year only in the event that he is satisfied in his sole judgement and discretion that the reasons for such Late Withdrawal or Non-Appearance were genuine, not foreseeable at the time of entry, justified and unavoidable and that the player has conducted himself in a professional manner with respect thereto. In order to petition for remission of this “first” Late Withdrawal or Non-Appearance fine, the player must:

1. Have notified the Director of Rules and Regulations, GST or his or her designate, and the Tournament Director as soon as reasonably possible after the onset or occurrence of the basis for such Late Withdrawal or Non-Appearance.

2. File with the Director of Rules and Regulations, GST or his or her designate, on or before ten (10) days after the first day of the tournament a written statement explaining in detail the reasons for such Late Withdrawal or Non-Appearance, along with any other evidence that the player deems important to such petition.
3. If the reason for such late Withdrawal or Non-Appearance is related to any injury or illness, furnish to the Director of Rules and Regulations, GST or his or her designate, within ten (10) days after the first day of the tournament the details thereof, certified to by a qualified physician and legibly set forth in English, French, German or Spanish on the Grand Slam Medical Certification Form. Such excuse will be good for consecutive Grand Slam Tournaments missed for the same reasons.
4. Provided, however, if a player is injured at a tournament site after 1800 GMT on the Friday before that tournament, then, if he is examined by the tournament doctor and the Referee and diagnosed in writing as being medically unfit for singles and doubles play, such fine will be remitted. Thereafter each player withdrawing late from or not appearing at the next Grand Slam Tournament for any reason will be fined as provided above.

E. DISCRETIONARY REVIEW

Any player found to have committed an Entry Offence may, after paying all fines as above provided, petition the designated Chair of the relevant Grand Slam tournament for discretionary review by the GST Board of the determination and penalty of the Director of Rules and Regulations, GST or his or her designate. The petition shall be in writing and must be filed with the, GST or his or her designate, within thirty (30) days after notice of the violation is mailed to the player. The Director of Director of Rules and Regulations, GST or his or her designate, shall thereafter promptly forward said petition to the relevant Chair. Said petition shall state in detail the basis for such appeal. Within thirty (30) days thereafter relevant Chair shall review such petition and shall determine in his sole discretion whether or not the GST Board shall hear the appeal. If the relevant Chair decides that the GST Board should not hear the appeal, then the decision of the Director of Rules and Regulations, GST or his or her designate, shall upon notice thereof become final. If the relevant Chair decides that the GST Board should hear the appeal, then he shall designate a time and place for the hearing of such appeal and shall so notify the player and the Director of Rules and Regulations, GST or his or her designate. At such hearing the player and the Director of Rules and Regulations, GST or his or her designate, shall present to the GST Board the relevant evidence on the matter. The GST Board may affirm, reverse, or modify the decision of the Director of Rules and Regulations, GST or his or her designate, on appeal. If the appeal is decided against the player, then GST shall tax the reasonable costs of the appeal against the player, which costs shall include, but not be limited to, the reasonable travel and living expenses incurred by all witnesses and members of the GST Board with respect thereto, if the same is not at a regularly scheduled meeting of the GST Board.

ARTICLE III: PLAYER ON-SITE OFFENCES

A. GENERAL

Every player shall, during all matches and at all times while within the precincts of the site of a Grand Slam Tournament, conduct him/herself in a professional manner. The provisions hereinafter set forth shall apply to each player's conduct while within the precincts of each such site.

B. PUNCTUALITY

Matches shall follow each other without delay in accordance with the announced order of play. The order of play shall be posted at a highly visible place in a general players' area as designated by the Referee.

The Referee shall designate an Official Clock for the event. Matches shall be called in accordance with the order of play using all available and reasonable means. Players shall be ready to play when their matches are called.

1. Any player not ready to walk-on court when their match is called may be fined up to \$20,000
2. Any player not ready to play within fifteen (15) minutes after his match is called may be fined up to an additional \$20,000 and shall be defaulted unless the Referee in his sole discretion, after consideration of all relevant circumstances, elects not to declare a default.

C. DRESS AND EQUIPMENT

Every player shall dress and present themselves for play in a professional manner. Clean and customarily acceptable tennis attire shall be worn as determined by each respective Grand Slam Tournament. Any exceptions to this standard must be submitted by manufacturers to the Director of Rules and Regulations, Grand Slam Tennis, prior to a Grand Slam Tournament, for approval.

1. Unacceptable Attire

Sweatshirts, gym shorts, dress shirts, T-shirts or any other inappropriate attire shall not be worn during a match (including the warm-up).

a. Shoes

Players are required to wear tennis shoes generally accepted as proper tennis attire. Shoes shall not cause damage to the court other than what is expected during the normal course of a match or practice. Damage to a court may be considered as physical or visible, which may include a shoe that leaves marks beyond what it considered acceptable. The Referee has the authority to determine that a shoe does not meet these criteria and may order the player to change.

i. Grass Court Shoes

At Wimbledon no grass courts shoes other than those with rubber soles, without heels, ribs, studs or coverings, shall be worn by players.

Special grass court shoes will not be used without the express approval of GST; such shoes will not be approved unless they comply with the following specifications:

1. The pimples or studs on the base of the sole should be vertical from the outsole and shall have maximum top diameter of three (3) millimetres and a minimum top diameter of two (2) millimetres. The maximum height of the pimples or studs shall be two (2) millimetres, from the base of the shoe. The hardness of any pimple shall be between 55 and 60 based on a shore "A" scale. The number of pimples per square inch shall be no less than 15 and no more than 28.
2. No pimples or studs may be visible when the shoe is placed on a flat horizontal surface and viewed vertically. The foxing/sidewall around the toes must be smooth and may only be contoured in the medial forefoot and medial toe area but only within the following restrictions. The contoured area may begin in the transition area between outsole and sidewall but can only extend to a maximum of 1.5 centimetre up the sidewall as measured from the base of the outsole. The contoured area must be smooth (not textured or undulating) but can be stepped with no more than five (5) steps each no more than one (1) millimetre in depth.
3. Forefoot and heel areas may be separated but there should be no more than a two (2) millimetres step in the outsole of the shoe.
4. No manufacturer's identification is to be used on the base of the outsole.

See Appendix B for example specification sheet.

Players desiring approval of special grass court shoes should submit a sample shoe to GST at least ninety (90) days in advance of Wimbledon.

ii. Clay Court Shoes

Players are required to wear tennis shoes generally accepted for play on clay courts. The Referee has the authority to determine that a tennis shoe's sole does not conform to such customs and standards and can prohibit its use at Roland-Garros.

Grass court shoes shall not be worn during a match at Roland-Garros.

- b. White Clothing and Footwear
Including the warm-up period, players at Wimbledon must be dressed almost entirely in white.

2. Identification

No identification shall be permitted on a player or on a player's clothing, products or equipment on court before, during and after a match or at any press conference or tournament ceremony, except as follows below. GST and Referee reserve the right to interpret the following rules so as to give effect to the intent and purposes of these Grand Slam Rules.

- a. Shirt, Sweater or Jacket
 - i. Sleeves. One (1) manufacturer's identification on each sleeve neither of which exceeds eight (8) square inches (52 sq.cm) shall be permitted. If written identification is used within these eight (8) square inches (52 sq.cm) area on either or both sleeves, such written identification may not exceed four (4) square inches (26 sq.cm) per sleeve.
 - ii. Sleeves or Front: Two (2) commercial (non-manufacturer's) identifications, neither of which shall exceed three (3) square inches (19.5 sq.cm), may be placed on the sleeves or front of the garment.
 - iii. Front, Back and Collar. Total of two (2) manufacturer's identifications, neither of which exceeds two (2) square inches (13 sq.cm) or one manufacturer's identification, which does not exceed four (4) square inches (26 sq.cm) shall be permitted.
- b. Shorts/Skirts
Two (2) manufacturer's identifications, neither of which exceeds two (2) square inches (13 sq.cm) or one manufacturer's identification which does not exceed four (4) square inches (26 sq.cm) shall be permitted.
Note: A dress for the purposes of permissible identification shall be treated as a combination of a skirt and a shirt (dividing dress at waist).
Compression shorts and/or compression sleeves may contain two (2) standard logos of the clothing manufacturer which must not exceed two (2) square inches (13 sq. cm.) or one (1) standard logo of the clothing manufacturer which must not exceed four (4) square inches (26 sq. cm.).
- c. Socks/Shoes
Manufacturer's identifications on each sock and on each shoe shall be permitted. The identifications on the sock(s) on each foot shall be limited to a maximum of two (2) square inches (13 sq.cm).

- d. Racquet
Manufacturer's identifications on racquet and strings shall be permitted.
- e. Hat, Headband, Wristband or Masks
One (1) manufacturer's identification not to exceed two (2) square inches (13 sq.cm) shall be permitted.
- f. Tennis Equipment Manufacturer's Bag, Other Equipment or Paraphernalia
Tennis equipment manufacturer's identifications on each item plus two (2) separate commercial identifications on one (1) tennis equipment manufacturer's bag, neither of which commercial identifications exceeds four (4) square inches (26 sq.cm), shall be permitted.
- g. Player ID
For a tennis clothing collection that includes a player's name, initials or other identifier that is solely used for tennis clothing and accessories ("Player ID"), such Player ID may be used interchangeably with the clothing manufacturer identification wherever manufacturer identifications are permitted under this rule.
- h. Drink Containers, Towels
Each Grand Slam Tournament will provide drink containers and towels for all participants to use. No other drink containers or towels will be allowed unless approved by the Referee, in consultation with the Chief of Grand Slam Supervisors.
- i. Sport and Day Chairs (Wheelchair Events)
Standard manufacturer's identifications on the tyres plus a maximum of two (2) manufacturer's identifications, neither of which exceeds three (3) square inches (19.5 sq.cm), on each wheel and four (4) manufacturer's identifications, neither of which exceeds 3 square inches (19.5 sq.cm), on the back of the wheelchair plus two commercial identifications on one (1) chair, neither of which exceeds three (3) square inches (19.5 sq.cm) shall be permitted.

See Appendix C for Sport and Day Chairs specification regulations.
- j. Another Tennis, Sport or Entertainment Event
Notwithstanding anything to the contrary hereinabove set forth the identification by use of the name, emblem, logo, trademark, symbol or other description of any tennis circuit, series of tennis events, tennis exhibition, tennis tournament, any other sport or entertainment event is prohibited on all dress or equipment, unless otherwise approved by GST.

k. **General**

In the event the utilisation of any of the foregoing permitted commercial identifications would violate any governmental regulation then the same shall be prohibited.

Any tobacco products (including electronic cigarettes or similar products) will be prohibited from any endorsements on player's clothing and equipment.

Identifications of any companies associated with tennis gambling and identifications of any casino, lottery or fantasy sport-branded company may not appear on the player's clothing and equipment.

For the purposes of this Rule, the 'manufacturer' means the manufacturer that:

- i. Is the manufacturer of the clothing or equipment in question; and
- ii. Grand Slam Tennis recognizes (in its reasonable discretion) as a company that derives a substantial portion of its revenue from the manufacture and sale of clothing or equipment intended primarily for use in competitive tennis/sport, and/or is manufacturing either the racquet, shoes, or clothing used by players at Grand Slam Events.
- iii. All unbranded equipment is subject to approval for use by the Referee in consultation with the Chief of Grand Slam Supervisors.

In addition, the size limitation shall be ascertained by determining the area of the actual patch or other addition to a player's clothing without regard to the colour of the same. In determining area, depending on the shape of the patch or other addition, a circle, triangle or rectangle shall be drawn around the same and the size of the patch for the purpose of this Rule shall be the area within the circumference of the circle or the perimeter of the triangle or rectangle as the case may be.

3. Warm-up Clothing

Players may wear warm-up clothing during the warm-up and during a match provided it complies with the foregoing provisions and provided further that the players obtain approval of the Referee prior to wearing warm-up clothing during a match.

4. Change/Taping

Any player who violates this Section may be ordered by the Chair Umpire, Grand Slam Supervisor or Referee to change his attire or equipment immediately. No taping over of such attire shall be allowed. Failure of a player to comply with such order may result in immediate default.

5. Fines

Any player who violates this Section and is not defaulted shall result in a fine of up to \$250,000:

- a. Unacceptable Attire
Violation of the provisions with respect to Unacceptable Attire.
- b. Manufacturer's Identification
Violation of the provisions with respect to manufacturer's identifications.
- c. Commercial Identification
Violation of the provisions with respect to commercial identifications.
- d. Another Tennis Event
Violation of the provisions with respect to the identification of Another Tennis Event.

D. LEAVING THE COURT

A player shall not leave the court area during a match (including the warm-up) without the permission of the Chair Umpire or Referee. Violation of this Section shall subject a player to a fine up to \$50,000 for each violation.

In addition the player may be defaulted and subjected to the additional penalties for Failure to Complete Match as hereinafter set forth.

E. BEST EFFORTS

A player shall use his best efforts to win a match when competing in a Grand Slam Tournament. Violation of this section shall subject a player to a fine up to \$50,000 for each violation. For purposes of this Rule, the Referee and/or the Chair Umpire shall have the authority to penalise a player in accordance with the Point Penalty Schedule. In circumstances that are flagrant and particularly injurious to the success of a tournament, or are singularly egregious, a single violation of this Section shall also constitute the Major Offence of "Aggravated Behaviour" and shall be subject to the additional penalties hereinafter set forth.

F. FAILURE TO COMPLETE MATCH

A player must complete a match in progress unless he is reasonably unable to do so. Violation of this Section shall subject a player to a fine up to \$50,000.

In circumstances that are flagrant and particularly injurious to the success of a tournament, or are singularly egregious, a violation of this Section shall subject a player to immediate default and shall also constitute the Major Offence of "Aggravated Behaviour" and shall be subject to the additional penalties hereinafter set forth.

G. FIRST-ROUND PERFORMANCE

All players are expected to perform to a professional standard in every Grand Slam Tournament match.

With respect to the First-Round Performance in the Qualifying and Main Draw, if in the opinion of the Referee the player did not perform to the required professional standard, the Referee may determine that the player be subject to a fine of up to first-round prize money.

Factors that may be considered by the Referee in making such a determination include, but are not limited to, the following:

1. the player did not complete the match;
2. the player did not compete in the 3 week period preceding the Grand Slam Tournament;
3. the player retired from the last tournament he/she played before the Grand Slam Tournament;
4. the player was using a Protected or Special Ranking for entry;
5. the player received a Code Violation for failure to use Best Effort.

H. MEDIA OPPORTUNITIES

Unless unable to appear on reasonable grounds (for instance illness or injury), both winning and losing players or teams will be required to attend post-match media opportunities organised at an appropriate and reasonable time (as a guideline 60 minutes is to be considered reasonable), following the conclusion of each match, including walkovers unless extended or otherwise modified by the Referee for good cause at both Qualifying and Main Draw events. These opportunities enable players to put across their opinions on their performance and provide valuable exposure to the media and fans. In addition, all Main Draw players will be required to participate in feature media opportunities on practice days both ahead of and during the event in order to help drive engagement with the sport. All media opportunities include, but are not limited to, interviews with the host and player's national broadcaster. Both singles champions also agree to participate in appropriate media activity as requested. The organisation of these media opportunities will be discussed with the player and the player liaison teams at each event, and the player is welcome to make use of support available at each event to assist them with the opportunities. If a player is unable to appear, the appropriate level of direct communication is requested. Violation of this Section shall subject a player to a fine up to \$50,000.

I. CEREMONIES

A player participating in the finals of a Grand Slam Tournament must attend and participate in the final ceremonies after the match unless he is reasonably unable to do so. Violation of this Section shall subject a player to a fine up to \$50,000.

J. START OF MATCH / TIME VIOLATION / DELAY OF GAME

A maximum of sixty (60) seconds shall elapse from when the last player arrives to his seat on court until the players are ready for the pre-match meeting with the Chair Umpire. This will be followed immediately by the warm-up period. At the end of the warm-up period the players have sixty (60) seconds to be ready to start the match.

Any player not ready in time for the warm-up or ready to play after the warm-up period is subject to a fine up to \$50,000.

Following the expiration of the warm-up period play shall be continuous and a player shall not unreasonably delay a match for any cause.

A maximum of twenty-five (25) seconds shall elapse from the moment the ball goes out of play at the end of the point until the time the ball is struck for the first serve of the next point. If such serve is a fault, then the second serve must be struck by the server without delay.

When changing ends a maximum of ninety (90) seconds shall elapse from the moment the ball goes out of play at the end of the game until the time the first serve is struck for the next game. If such first serve is a fault the second serve must be struck by the server without delay. However, after the first game of each set and during a tie-break, play shall be continuous, and the players shall change ends without a rest period.

At the conclusion of each set, regardless of the score, there shall be a set break of one hundred and twenty (120) seconds from the moment the ball goes out of play at the end of the set until the time the first serve is struck for the next set.

If a set ends after an even number of games, there shall be no change of ends until after the first game of the next set.

The receiver shall play to the reasonable pace of the server and shall be ready to receive within a reasonable time of the server being ready. A Time Violation may be issued prior to the expiration of twenty-five (25) seconds if the receiver's actions are delaying the reasonable pace of the server.

The first violation of this Section, as either server or receiver, shall be penalised by a Time Violation warning and each subsequent violation, as either server or receiver shall be penalised as follows:

- Server The Time Violation shall result in a "fault"
- Receiver The Time Violation shall result in a "point penalty"

When a violation is a result of a medical condition, refusal to play or not returning to the court within the allowed time a Code Violation (Delay of Game) penalty shall be assessed in accordance with the Point Penalty Schedule.

K. AUDIBLE OBSCENITY

Players shall not use audible obscenity within the precinct of the tournament site. Violation of this Section shall subject a player to a fine up to \$50,000 for each violation. In addition, if such violation occurs during a match (including the warm-up), the player shall be penalised in accordance with the Point Penalty Schedule hereinafter set forth. In circumstances that are flagrant and particularly injurious to the success of a tournament, or are singularly egregious, a single violation of this

Section shall also constitute the Major Offence of “Aggravated Behaviour” and shall be subject to the additional penalties hereinafter set forth.

For the purposes of this Rule, audible obscenity is defined as the use of words commonly known and understood to be profane and uttered clearly and loudly enough to be heard by the Chair Umpire, spectators, Line Umpires or Ball persons.

L. COACHING AND COACHES

Coaching is allowed at all Grand Slam tournaments under the following conditions:

- The coach must sit in the tournament’s designated coaches’ seats
- Verbal coaching is permitted only when the player is at the same end of the court
- Verbal coaching may consist of a few words and/or short phrases (no conversations are permitted)
- Non-verbal coaching (hand signals) is permitted
- Coaching (verbal and non-verbal) is allowed only if it does not interrupt play or create any hindrance to the opponent
- Players may approach their coach or engage in conversation with their coach during an opposing player’s Medical Timeout or a Toilet Break / Change of Attire Break or another break approved by the Chair Umpire during which the players remain on court
- Coaches may not speak to their player, when the player leaves the court for any reason
- Penalties and fines to apply for abuse or misuse of the coaching conditions.

Players shall also prohibit their coaches (1) from using audible obscenity within the precincts of the tournament site, (2) from making obscene gestures of any kind within the precincts of the tournament site, (3) from verbally abusing any official, opponent, spectator or other person within the precincts of the tournament site, (4) from physically abusing any official, opponent, spectator or other person within the precincts of the tournament site and (5) from giving, making, issuing, authorising or endorsing any public statement within the precincts of the tournament site having, or designed to have, an effect prejudicial or detrimental to the best interests of the tournament and/or of the officiating thereof.

Violation of this Section shall subject a player to a fine up to \$50,000 for each violation. In addition, if such violation occurs during a match (including the warm-up), the player shall be penalised in accordance with the Point Penalty Schedule hereinafter set forth. In circumstances that are flagrant and particularly injurious to the success of a tournament, or are singularly egregious, the Referee shall have the authority to relocate the position of a coach or the Referee may order the Coach to be removed from the site of a match or the precincts of the tournament site and upon his failure to comply with such order, may declare an immediate default of such player.

M. VISIBLE OBSCENITY

Players shall not make obscene gestures of any kind within the precincts of the tournament site.

Violation of this Section shall subject a player to a fine up to \$50,000 for each violation. In addition, if such violation occurs during a match (including the warm-up), the player shall be penalised in accordance with the Point Penalty Schedule hereinafter set forth. In circumstances that are flagrant and particularly injurious to the success of a tournament, or are singularly egregious, a single violation of this Section shall also constitute the Major Offence of “Aggravated Behaviour” and shall be subject to the additional penalties hereinafter set forth.

For the purposes of this Rule, visible obscenity is defined as the making of signs by a player with his hands and/or racquet or balls that commonly have an obscene meaning.

N. ABUSE OF BALLS

Players shall not violently, dangerously or with anger hit, kick or throw a tennis ball within the precincts of the tournament site except in the reasonable pursuit of a point during a match (including warm-up).

Violation of this Section shall subject a player to fine up to \$50,000 for each violation. In addition, if such violation occurs during a match (including the warm-up) the player shall be penalised in accordance with the Point Penalty Schedule hereinafter set forth. For the purposes of this Rule, abuse of balls is defined as intentionally hitting a ball out of the enclosure of the court, hitting a ball dangerously or recklessly within the court or hitting a ball with negligent disregard of the consequences.

O. ABUSE OF RACQUETS OR EQUIPMENT

Players shall not violently or with anger hit, kick or throw a racquet or other equipment within the precincts of the tournament site.

Violation of this Section shall subject a player to a fine up to \$50,000 for each violation. In addition, if such violation occurs during a match (including the warm-up), the player shall be penalised in accordance with the Point Penalty Schedule hereinafter set forth.

For the purposes of this Rule, abuse of racquets or equipment is defined as intentionally and violently destroying or damaging racquets or equipment or intentionally and violently hitting the net, court, umpire’s chair or other fixture during a match out of anger or frustration.

P. VERBAL ABUSE

Players shall not at any time directly or indirectly verbally abuse any official, opponent, sponsor, spectator or other person within the precincts of the tournament site.

Violation of this section shall subject a player to a fine up to \$50,000 for each violation. In addition, if such violation occurs during a match (including the warm-up), the player shall be penalised in accordance with the Point Penalty Schedule hereinafter set forth. In circumstances that are flagrant and particularly injurious to the success of a tournament, or are singularly egregious, a single violation of this Section shall also constitute the Major Offence of “Aggravated Behaviour” and shall be subject to the additional penalties hereinafter set forth.

For the purposes of this Rule, verbal abuse is defined as a statement about an official, opponent, sponsor, spectator or other person that implies dishonesty or is derogatory, insulting or otherwise abusive.

Q. PHYSICAL ABUSE

Players shall not at any time physically abuse any official, opponent, spectator or other person within the precincts of the tournament site.

Violation of this Section shall subject a player to a fine up to \$50,000 for each violation. In addition, if such violation occurs during a match (including the warm-up), the player shall be penalised in accordance with the Point Penalty Schedule hereinafter set forth. In circumstances that are flagrant and particularly injurious to the success of a tournament, or are singularly egregious, a single violation of this Section shall also constitute the Major Offence of “Aggravated Behaviour” and shall be subject to the additional penalties hereinafter set forth.

For the purposes of this Rule, physical abuse is the unauthorised touching of an official, opponent, spectator or other person.

R. UNSPORTSMANLIKE CONDUCT

Players and their accredited support team members shall at all times conduct themselves in a sportsmanlike manner and give due regard to the authority of officials and the rights of opponents, spectators and others. Violation of this Section shall subject a player to a fine up to \$100,000 for each violation. In addition, if such violation occurs during a match (including the warm-up), the player shall be penalised in accordance with the Point Penalty Schedule hereinafter set forth.

Players and their support team members accredited must comply with the Covid-19 precautionary measures applicable. Any breach of those measures may be considered a violation of this Section and may lead to a Default and/or Loss of Accreditation. In addition, support team members are also subject to a fine up to \$50,000, for which the player is responsible.

In circumstances that are flagrant and particularly injurious to the success of a tournament, or are singularly egregious, a single violation of this Section shall also constitute the Major Offence of “Aggravated Behaviour” and shall be subject to the additional penalties hereinafter set forth.

For the purposes of this Rule, Unsportsmanlike Conduct is defined as any misconduct by a player that is clearly abusive or detrimental to the Sport. In addition, unsportsmanlike conduct shall include, but not be limited to, the giving, making, issuing, authorising or endorsing any public statement having, or designed to have, an effect prejudicial or detrimental to the best interests of the tournament and/or the officiating thereof.

S. POINT PENALTY SCHEDULE

The Point Penalty Schedule to be used for violations set forth above is as follows:

FIRST offence
SECOND offence
THIRD AND EACH SUBSEQUENT offence

WARNING
POINT PENALTY
GAME PENALTY

However, after the third Code Violation, the Referee in consultation with the Grand Slam Chief of Supervisors shall determine whether each subsequent offence shall constitute a default.

T. DEFAULTS

The Referee in consultation with the Grand Slam Supervisor may declare a default for either a single violation of this Code or pursuant to the Point Penalty Schedule set out above.

In all cases of default, the decision of the Referee in consultation with the Grand Slam Supervisor shall be final and unappealable.

Any player who is defaulted as herein provided shall lose all ranking points earned for that event at that tournament and shall lose all prize money earned at the tournament in addition to any or all other fines levied with respect to the offending incident. If the offending incident involves a violation of the Covid-19 precautionary measures under the Unsportsmanlike Conduct section, Article III R the player shall not lose the ranking points earned but may be fined up to the prize money earned at the tournament.

In addition, any player who is defaulted as herein provided may be defaulted from all other events, if any, in that tournament, except when the offending incident involves only a violation of the Punctuality or Dress and Equipment provisions set forth in Article III. B and C, or as a result of a medical condition or when his doubles partner commits the Code Violation which causes the default.

U. DOUBLES EVENTS

1. Warnings/Point Penalties/Game Penalties/Defaults

Warnings, point penalties, game Penalties and/or a default if assessed for violation of the Code shall be assessed against the team.

2. Fines

Fines for violation of Article III of the Code shall be assessed only against the individual member of the team who is in violation unless both members of the team are in violation.

V. DETERMINATION AND PENALTY

The Referee in consultation with the Grand Slam Supervisors shall make such investigation as is reasonable to determine the facts regarding all Player On-Site Offences and upon determining that a violation has occurred shall specify the fine and/or other punishment therefor and give written notice thereof to the player. Notwithstanding anything contained herein to the contrary, the Referee may, at his discretion, limit the fines levied during any tournament Qualifying competitions to a maximum of \$20,000 for each violation.

W. PAYMENT OF FINES

Each Grand Slam Tournament shall deduct such fines from the player's prize money, if any, and promptly pay the same to GST. In the event that the player's prize money is insufficient to pay such fine, the player shall pay the balance thereof within twenty (20) days after the tournament to GST.

X. APPEALS

Any player convicted of a violation of a Player On-Site Offence may, after paying all fines, appeal to the Director of Rules and Regulations, GST, or his or her designate for review of the determination of guilt and penalty therefor. Such Notice of Appeal shall be in writing and filed by 17:00 GMT with the Director of Rules and Regulations, GST or his or her designate, within ten (10) days after the last day of the event. Attached to and included with such Notice of Appeal shall be a statement by the player as to the facts and circumstances of such incident along with any other evidence that the player desires to submit.

Upon receipt of such an Appeal, the Director of Rules and Regulations, GST or his or her designate, shall conduct a reasonable investigation of the facts and circumstances surrounding such incident and shall affirm or reverse in whole or in part the determination of the Referee. In the event of a whole or partial reversal the Director of Rules and Regulations, GST or his or her designate, shall remit to the player all or part of the fines collected in accordance with the disposition of the appeal. The decision of the Director of Rules and Regulations, GST or his or her designate is final and non-appealable.

ARTICLE IV: PLAYER MAJOR OFFENCES

A. AGGRAVATED BEHAVIOUR

No player or Related Person at any Grand Slam Tournament shall engage in "Aggravated Behaviour" which is defined as follows:

1. One or more incidents of behaviour designated in this Code as constituting "Aggravated Behaviour".
2. One incident of behaviour that is flagrant and particularly injurious to the success of a Grand Slam Tournament, or is singularly egregious, including submitting a falsified Covid-19 vaccination record.
3. A series of two (2) or more violations of this Code within a twelve (12) month period which singularly do not constitute "Aggravated Behaviour", but when viewed together establish a pattern of conduct that is collectively egregious and is detrimental or injurious to the Grand Slam Tournaments.

In addition, any Player or Related Person who, directly or indirectly, offers or provides or receives any money, benefit or consideration to or from any other Covered Person or third party in exchange for access and/or accreditation to the tournament site shall be deemed to have engaged in Aggravated Behaviour and be in violation of this Section.

Violation of this Section by a player, directly or indirectly through a Related Person or others, shall subject a player to a fine of up to \$250,000 or the amount of prize money won at the tournament, whichever is greater, and a maximum penalty of permanent suspension from play in all Grand Slam Tournaments.

Violation of this Section shall subject a Related Person to a maximum penalty of permanent revocation of accreditation and denial of access to all Grand Slam Tournaments.

B. CONDUCT CONTRARY TO THE INTEGRITY OF THE GAME

No player or Related Person shall engage in conduct contrary to the integrity of the game of tennis. If a player is convicted of the violation of a criminal or civil law of any country, he may be deemed by virtue of such conviction to have engaged in conduct contrary to the integrity of the Game of Tennis and the Director of Rules and Regulations, GST or his or her designate, may provisionally suspend such player from further participation in Grand Slam Tournaments pending a final Determination in Section C. In addition, if a player has at any time behaved in a manner severely damaging to the reputation of the Sport, including but not limited to the commission of a Major Offense or its equivalent under the relevant Codes of Conduct for ATP, WTA and/or ITF, he may be deemed by virtue of such behaviour to have engaged in conduct contrary to the integrity of the Game of Tennis and the Director of Rules and Regulations, GST or his or her designate, may also provisionally suspend such player from further participation in Grand Slam Tournaments pending a Final Determination in Section C. Violation of this Section by a player, directly or indirectly through a Related Person or others, shall subject a player to a fine up to \$250,000 and/or to a maximum penalty of permanent suspension from play in all Grand Slam Tournaments.

Violation of this Section shall subject a Related Person to a maximum penalty of permanent revocation of accreditation and denial of access to all Grand Slam Tournaments.

C. DETERMINATION AND PENALTY

The Director of Rules and Regulations, GST or his or her designate shall cause an investigation to be made of all facts concerning any alleged Major Offence and shall provide written notice of such investigation to the player involved; the player shall be given at least five (5) business days to provide to the Director of Rules and Regulations, GST or his or her designate, directly or through counsel, such evidence as the player deems to be relevant to the investigation. Upon the completion of his investigation the Director of Rules and Regulations, GST or his or her designate, shall determine the innocence or guilt of the player involved, and, in the latter case, shall

state in writing the facts as found by him, his conclusions and his decision fixing the penalty to be imposed. A copy of the decision shall be promptly delivered to the player and to GST.

D. PAYMENT OF FINES

All fines levied by the Director of Rules and Regulations, GST, or his or her designate, for Player Major Offences shall be paid by the player to GST by delivery to the Director of Rules and Regulations, GST or his or her designate, within thirty (30) days after receipt of written notice thereof. If the fine is not paid in thirty (30) days the Director of Rules and Regulations, GST or his or her designate, will instruct the next Grand Slam Tournament to withhold prize money due to the player until settlement is made.

E. APPEAL

Any player determined to be guilty of a Player Major Offence by the Director of Rules and Regulations, GST, or his or her designate, after paying all fines, may appeal such determination to GST for review by written Notice of Appeal filed with the Director of Rules and Regulations, GST, or his or her designate, within five (5) business days after receiving notice of the Director of Rules and Regulations, GST's, or his or her designates, determination.

F. HEARING ON APPEAL

After the Notice of Appeal is filed, GST shall set a date, time and place for the Hearing on Appeal and shall so notify the player and the Director of Rules and Regulations, GST, or his or her designate, provided that such date be as soon as reasonably possible after the Director of Rules and Regulations, GST's, or his or her designates Determination and no later than thirty (30) days thereafter. The Hearing on Appeal shall be conducted in accordance with the following:

1. Burden of Proof

The burden of proof shall be on the Director of Rules and Regulations, GST, or his or her designate to prove a violation by a preponderance of the evidence.

2. Rules

GST shall not be bound by any particular rules governing procedure or the admissibility of evidence provided that the Hearing is conducted in a fair and orderly manner with full opportunity to each side to present its case.

3. Presentation

The Director of Rules and Regulations, GST, or his or her designate and the player may present their respective cases personally and/or through counsel.

4. Statement of Position

GST shall request the Director of Rules and Regulations, GST, or his or her designate and the player to state in writing their respective positions on the

facts, the provision of the Code allegedly violated and the penalty specified and file the same at least ten (10) days prior to the Hearing and with a copy to each other.

5. Evidence

Each side shall have the right to present witnesses, documentary evidence, and testimony by affidavit or deposition. Documentary evidence and affidavits shall not be admissible unless a copy thereof is submitted at least ten (10) days prior to the Hearing to GST and to the other party. Should objection be made to the introduction of an affidavit, GST may determine at its or their discretion that the interests of fairness require that the affiant be produced to testify at the Hearing, or, alternatively, that such affidavit be excluded. In the case of the former, a reasonable continuance must be granted for production of such witness.

6. Hearing

The Hearing shall be closed to the public unless both parties agree otherwise.

7. Record

The Hearing shall not ordinarily be transcribed, but each side shall have the right to have it recorded or transcribed at their sole expense.

8. Interpreter-Legal Advisor

GST shall, if required in the interest of fairness, make provisions for the presence of an interpreter and/or legal advisor for the Hearing. The reasonable expenses of such interpreter or legal advisor shall be assumed by GST.

G. DECISION ON APPEAL

As soon as practical GST shall by written opinion issued after the conclusion of the Hearing on Appeal reverse or affirm in whole or in part the decision of the Director of Rules and Regulations, GST, or his or her designate. Said written opinion shall set forth the facts as found by GST and the reasons in support of its determination. In addition, GST shall tax to the losing party all reasonable costs of the Appeal, including, but not limited to, the expenses and charges of the interpreter, legal advisor and any adverse witness required upon objection to testify concerning facts originally presented by way of affidavit. If the costs are taxed against a player as hereinabove provided, the same must be paid by the player to GST by delivery to the Director of Rules and Regulations, GST or his or her designate, within ten (10) days after receipt of the decision of GST.

ARTICLE V: DISTRIBUTION OF FINES

All final fine amounts not subject to appeal or remission received by the Grand Slam Tournaments in connection with offences occurring under this Grand Slam Code of Conduct shall be remitted to the Grand Slam Player Development Programme to assist and finance the further development of tennis as an international sport.

ARTICLE VI: SUSPENSIONS AND COLLECTION OF FINES

A. APPLICABILITY

This Article shall be applicable to all provisions of the Code relating to suspensions and fines.

B. CALENDAR YEARS

Whenever any suspension is involved as a penalty for a violation of this Code, such suspension may if necessary be specified to cover all or parts of more than one calendar year; provided, however, that this provision shall not be construed to enlarge the term of any suspension as specified in the applicable provision for an offence under this Code.

C. STAY OF SUSPENSIONS PENDING APPEALS

Whenever suspension of a player is decided upon by the Director of Rules and Regulations, GST, or his or her designate, and an appeal either of right or discretionary review is perfected by the party aggrieved, then such suspension shall be stayed pending the resolution of such appeal.

D. SUSPENSION FOR NON-PAYMENT OF FINES

If, subsequent to the imposition of a fine, the same is not timely paid as hereinabove provided, the Director of Rules and Regulations, GST or his or her designate, may suspend, pending payment, the party fined from further participation in further Grand Slam Tournaments. In addition, the Director of Rules and Regulations, GST or his or her designate, is authorised to obtain collection of all overdue fines along with costs, if any, by all reasonable means, including deduction thereof from any subsequent winnings or amateur expenses in the same or succeeding year, or through the institution of legal proceedings as may be deemed necessary and appropriate.

ARTICLE VII: INTERPRETATIONS

Any person or entity subject to this Code may file with the Director of Rules and Regulations, GST or his or her designate, a request for an interpretation or clarification of the Code and/or its applicability and effect on a particular event or transaction. Upon receipt of such request the Director of Rules and Regulations, GST or his or her designate, shall place the same on the agenda for consideration at the next meeting of the GST Board. If a decision is necessary for the interim, the Director of Rules and Regulations, GST or his or her designate, may render a decision upon which the requesting party may rely pending final disposition by GST.

ARTICLE VIII: NOTICE

All written communications to GST or the Director of Rules and Regulations, GST or his or her designate, should be addressed as follows, unless notice of change is subsequently published:

Director of Rules and Regulations, Grand Slam Tennis
Bank Lane
Roehampton
London SW15 5XZ
United Kingdom

rulesandregulations@grandslamtennis.com

Notice of appeal should be sent to: appeal@grandslamtennis.com

Notice that a player is being investigated pursuant to a possible Major Offence charge shall be served personally upon him. Service of any other document required by the Code shall be deemed complete if mailed to the subject player at his home address or other address designated by the player, along with a copy to any player association of which he or she is a member provided that the Director of Rules and Regulations, GST or his or her designate, has notice of such membership.

ARTICLE IX: MEDIA CODE OF CONDUCT

A. GENERAL

All accredited media are asked to oblige by the Grand Slam Media Code of Conduct which request that media behave in a courteous and professional manner at all times, and according to the terms and conditions of accreditation at each Grand Slam Tournament, which include restrictions around filming and other areas. In the event that a member of the media contravenes these terms and conditions, the individual Grand Slam Tournament is able to consider appropriate penalties, including removal of accreditation.

ARTICLE X: AMENDMENTS

Pursuant to Resolution, the Codes may only be amended by the affirmative vote of at least three Grand Slam Tournament members of Grand Slam Tennis at a regular or special meeting.

ARTICLE XI: TENNIS ANTI-CORRUPTION PROGRAM

Complete rules of the Tennis Anti-Corruption Program (“TACP”) can be found at <https://www.itia.tennis/tacp/rules>.

ARTICLE XII: DRUG OFFENCES

Players entering a Grand Slam Tournament agree, as a condition of entry, that the Tennis Anti-Doping Programme (the “TADP”) applies to the Grand Slam Tournaments, and all players who participate in those tournaments and all of their “Player Support Personnel” (as defined in the TADP) shall be deemed to have agreed to be bound by and to comply with all of the provisions of the TADP. The TADP may be downloaded at <https://www.itia.tennis/tadp/rules>.

APPENDIX A

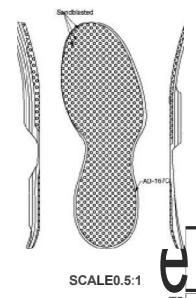
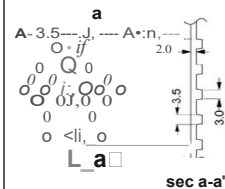
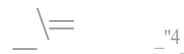
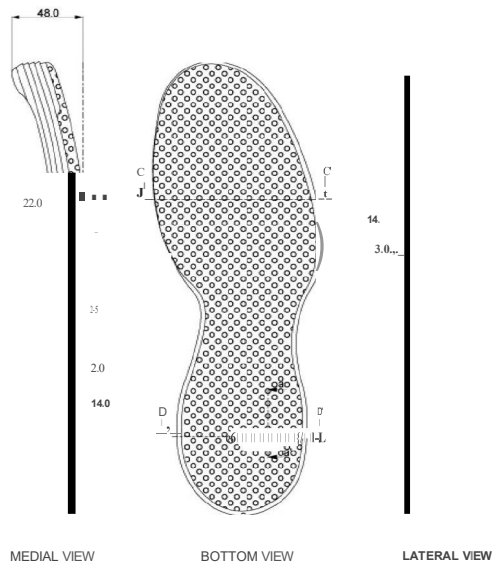
Tennis Australia
Private Bag 6060
Richmond
Victoria 3121
Australia
Tel: +61 3 9914 4000
www.ausopen.com

Fédération Française de Tennis
Stade Roland-Garros
2 Avenue Gordon Bennett
75016 Paris
France
Tel: +33 1 47 43 48 00
www.rolandgarros.com

All England Lawn Tennis & Croquet Club
Church Road
Wimbledon
London SW19 5AE
United Kingdom
Tel: +44 20 8944 1066
www.wimbledon.com

United States Tennis Association
2500 Westchester Ave – Suite 411
Purchase
New York NY 10577
USA
Tel: +1 914 696 7000
www.usopen.org

APPENDIX B



MmledonGrassoutsole

2016

2016

10/1

S.C. □ □

APPENDIX C

Grass Court Protection Regulations for Sports Chairs

Regulations to prevent damage to protect the playing surface throughout the event.

- i. Footrests and frame
 - a. The underside of the footrests must be designed to prevent damage to the playing surface.
 - b. Sharp edges on the frame should be covered.
- ii. Front and rear castors
 - a. Castor wheels must be in good condition without any excessive wear (Fig 1).
 - b. Castor wheels must be made from a suitable material without any sharp edges or damage.
 - c. Castor wheels must confirm the below requirements (Fig 2):
 1. Minimum diameter: 60mm.
 2. Minimum edge radius: 4mm.
 3. Minimum width: 24mm

Please note that the suggested castor wheels have been shown to have no detrimental effects on wheelchair mobility performance.

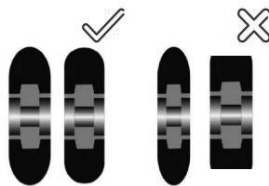


Figure 1:
Examples of approved castor
wheel (left) vs. Unapproved
castor wheel (right)

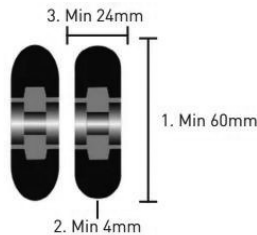


Figure 2:
Castor wheel requirements

